



Pikialasorsuaq Commission

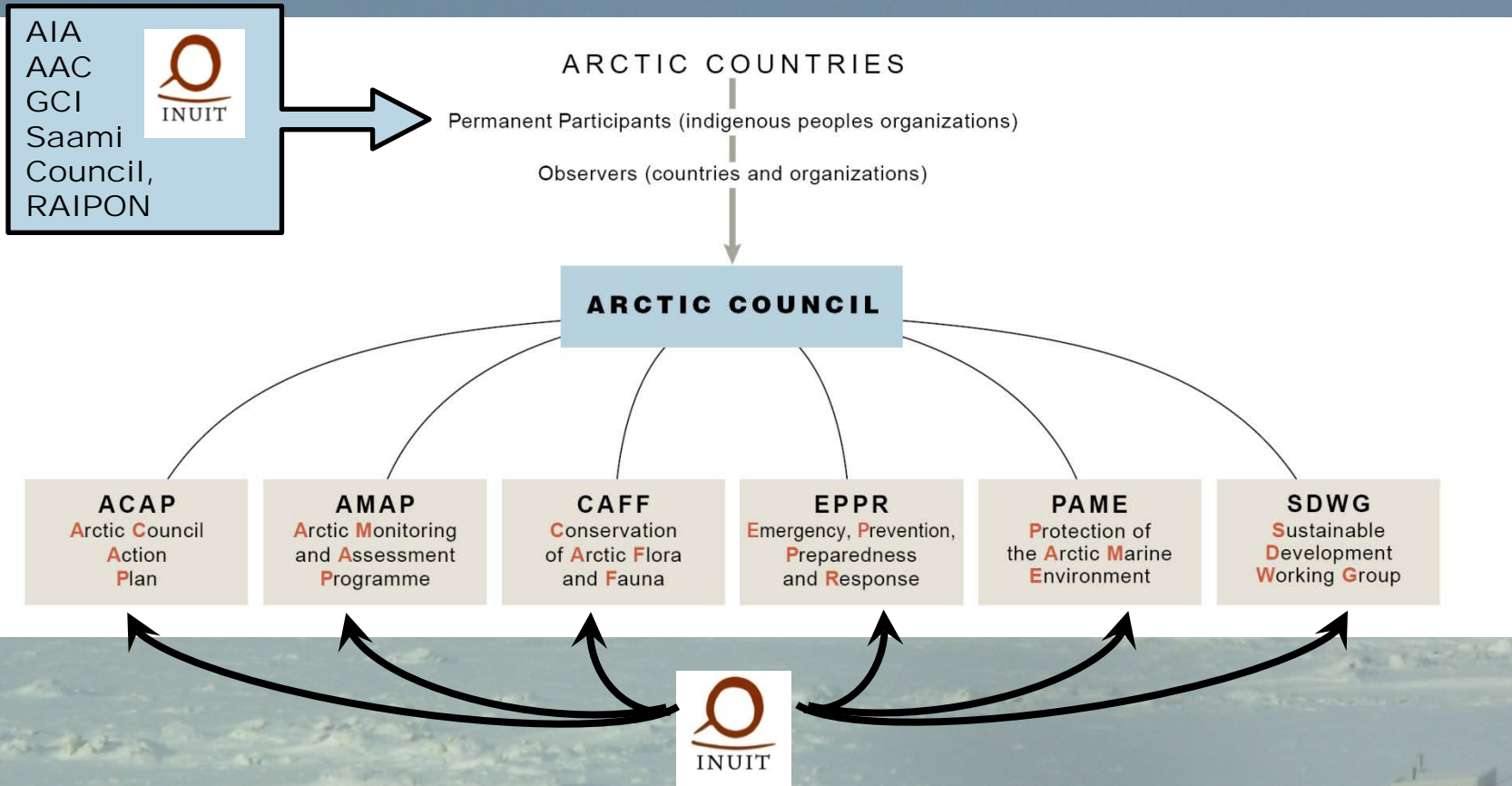
Science and Tools for Developing Arctic MPA Networks:
Understanding Connectivity and Identifying Management Models
September 22-23, 2016
Inuit Circumpolar Council
Presented by Carolina Behe

Inuit Circumpolar Council



Inuit Circumpolar Council

Arctic Council Structure



Pikialasorsuaq Commission



Inuit Circumpolar Council



Three Commissioners



- Okalik Eegeesiak - International Commissioner
- Kuupik Kleist- Greenland Commissioner
- Eva Aariak - Canadian Commissioner



Inuit Circumpolar Council

Mandate of the Commission

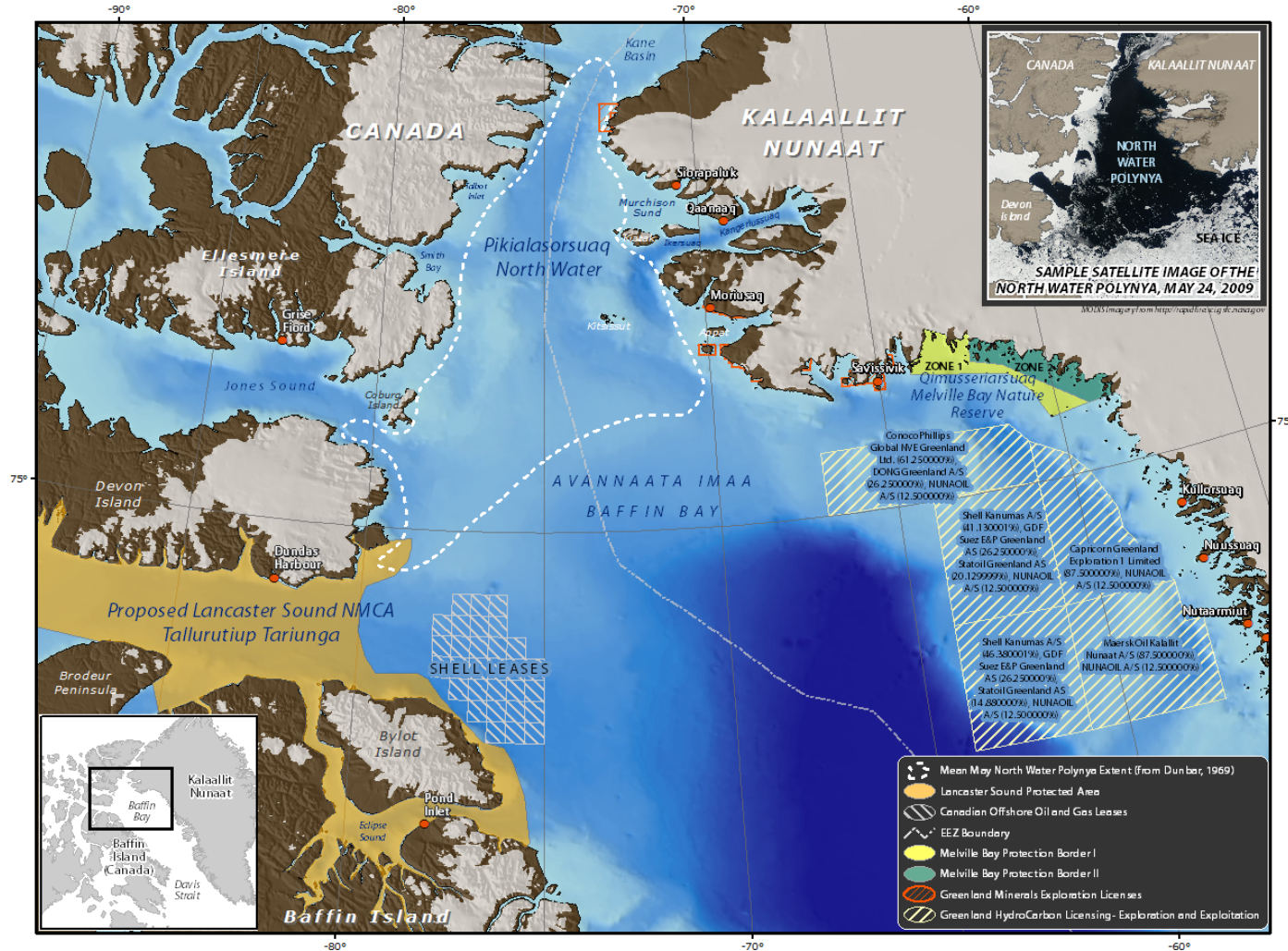
Photo Credit Mads Krientensen



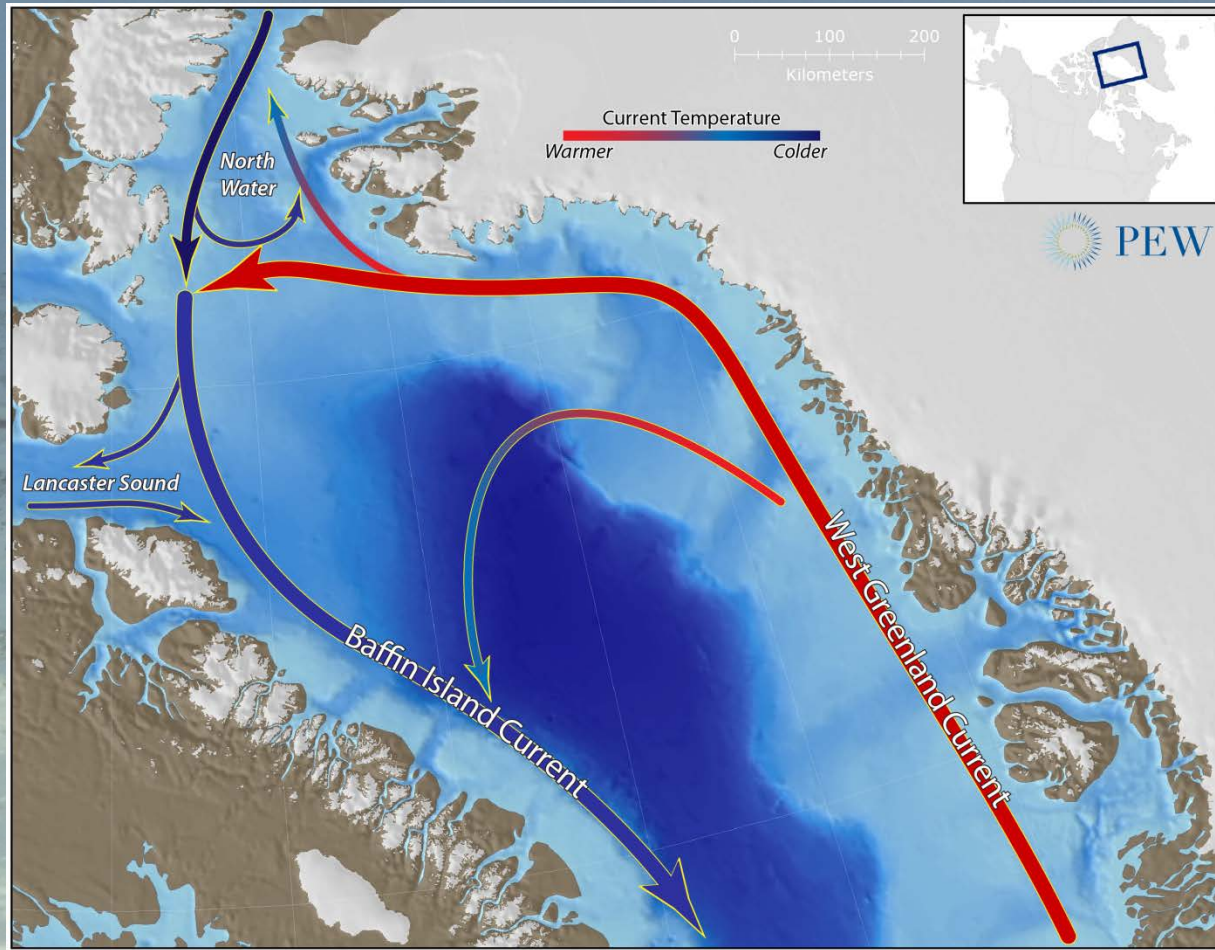
Inuit Circumpolar Council

Pikialasorsuaq Commission provides an informed Inuit vision and recommendations for the future of this region.

Pikialasorsuaq



Ocean and wind currents



Inuit Circumpolar Council

Pew trust



Little Auk (Alle alle)



INUIT

INUIT

INUIT



Inuit Use the Pikialasorsuaq

Photo Credit Mads Ole Kristensen



Inuit Circumpolar Council

Heading to the flow edge

Photo Credit Mads Ole Kristensen



Inuit Circumpolar Council

What we heard

Photo Credit Vincent Desrosiers and Mads Kristensen



Inuit Circumpolar Council





**For More Information Please Contact
Stephanie Meakin M.Sc., Senior
Science Advisor ICC
smeakin@inuitcircumpolar.com**

Website under construction

Inuit Circumpolar Council