

ᑭᑏ



S I K K U

The Inuit Knowledge Wiki & Social Mapping Platform



Nunavut hunting stories of the day

Secret group

About

Discussion

Chats

Announcements

Members

Events

Videos

Photos

Files

Search this group

Shortcuts

- Hudson Bay Consort...
- Arctic Eider Society
- Sanikiluaq Announ...
- NIFCO
- Bruce Gibler's 60th B...
- Inuit Hunting storie...
- The Empress Emplo...
- Thelma & Louisey Moo...



Joined ▾ Notifications Add Members More

Write Post Add Photo/Video Live Video More

Write something...

Photo/Video Get Together Poll

Announcements See All (2)

Nick Illaig shared a post
Admin - October 17

Apply today

JOIN US FOR WINTER/SPRING 2019



For an application visit your nearest Arctic College Community Learning Centre, Headset Office, or www.arcticcollege.ca

ADD MEMBERS

Enter name or email address...

MEMBERS 45,412 Members



DESCRIPTION

show pictures of your hunts, videos of your hunts, pictures of y... [See More](#)

CREATE NEW GROUPS

Groups make it easier than ever to share with friends, family and teammates. [Create Group](#)

RECENT GROUP PHOTOS See All



Suggested Groups See All



Meet the team behind Arctic Eider

Leadership



Core Team



Community Liaisons



10

Academic
Collaborators

Dr. Joel Heath Executive Director

Lucassie Arragutainaq Director

Jackie Kidd Education

Evan Warner Interactive Design

Frankie Jean-Gagnon Research & Logistics

Kristen Kownak Youth Mentor

Phillip Blaise Mobile Development

Mathieu Bourgeois Web Development

Pauloosie Kasudluak Inukjuak

Annie Kasudluak Umiujaq

Peter Paul Cookie Kuujjuaraapik

John Lameboy Chisasibi

Johnny Kudluarok Sanikiluaq



Guiding Principles

1

Respect for Indigenous Knowledge and Rights Holders



2

Self-Determination in research, education and stewardship through accessible tools, language and services



3

Permissions for Informed Data Stewardship and Ownership over Intellectual Property



4

Integrity of information facilitating safe travel, knowledge transfer, language and cultural preservation.



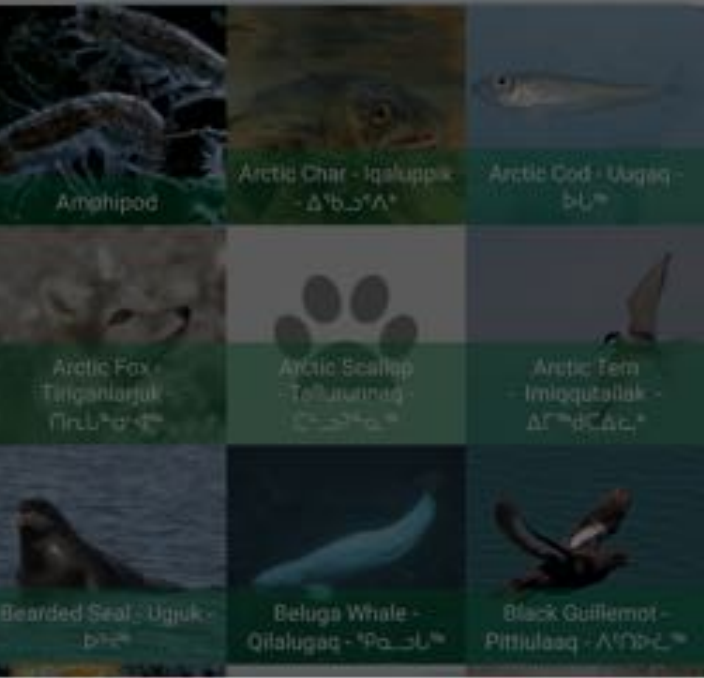
Trip

start

pause

finish







Hunting story Sample collected

 Set Location and time 

 Photos & description 

 Describe the animal 

SEX
 Unknown Female Male

AGE
 Unknown Juvenile Adult Old

SIZE
 Unknown Small Average Large

BODY CONDITION
 Unknown Skinny Average Fat



 Take a photo of the entire animal



Describe the animal(s) you hunted

Describe stomach contents/diet



Stomach Photo

Take a photo of the stomach contents of the animal.

Tag Stomach Contents

Arctic Cod - Uugaq - ᐅᐅᐅᐅ

Stomach Contents Notes

Describe the animal's condition

Record animal measurements

Record sample information



Choose a unit system

UNIT TYPE

- Metric
- Imperial

Enter contributor tags

Tag Community

Sanikiluaq

Tag Contributors

Joel Heath

Lucassie Arragutainaq

Tag Organizations

Arctic Eider Society

Tag Projects

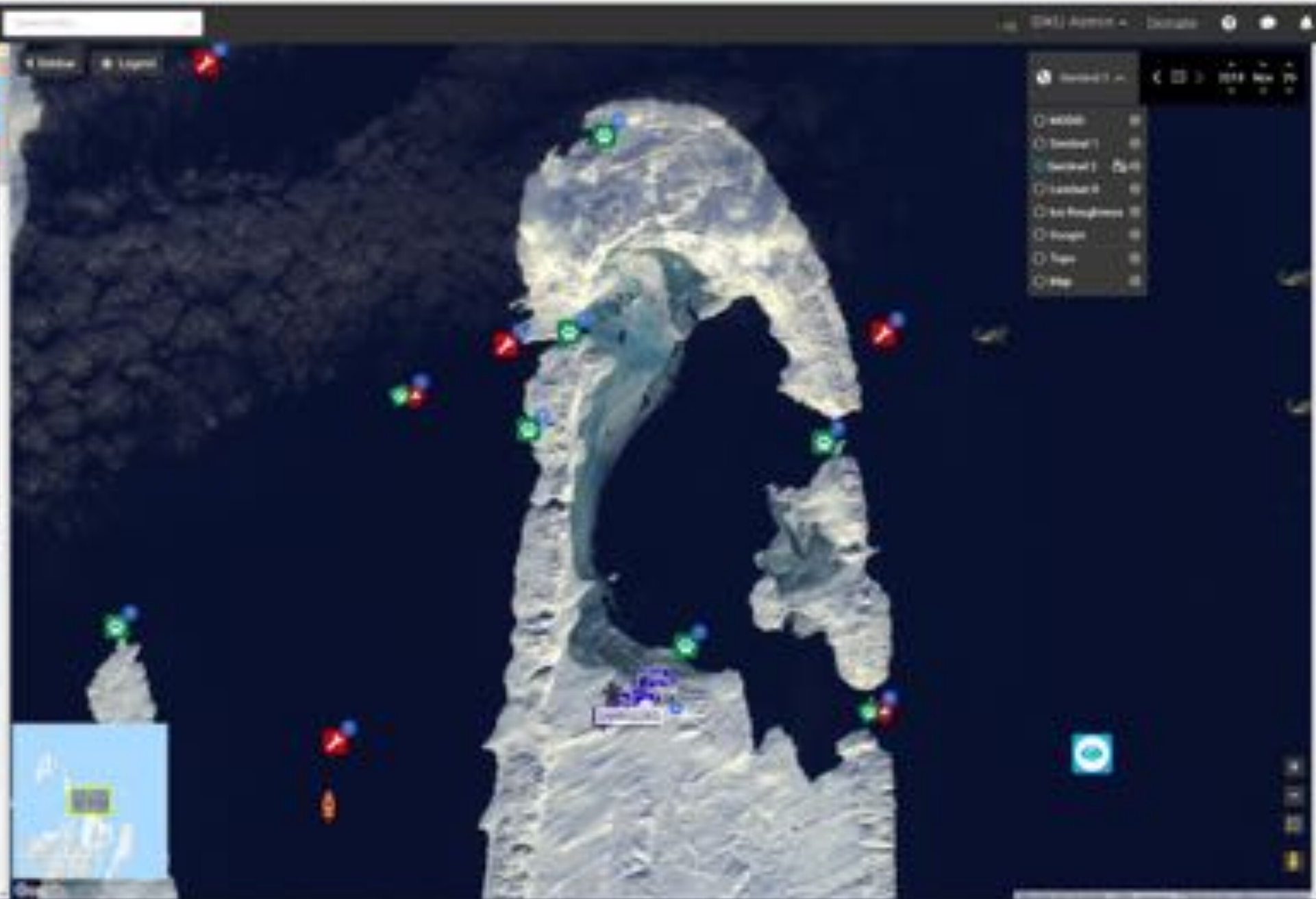
SIKJ Hunting St... Pilot Project

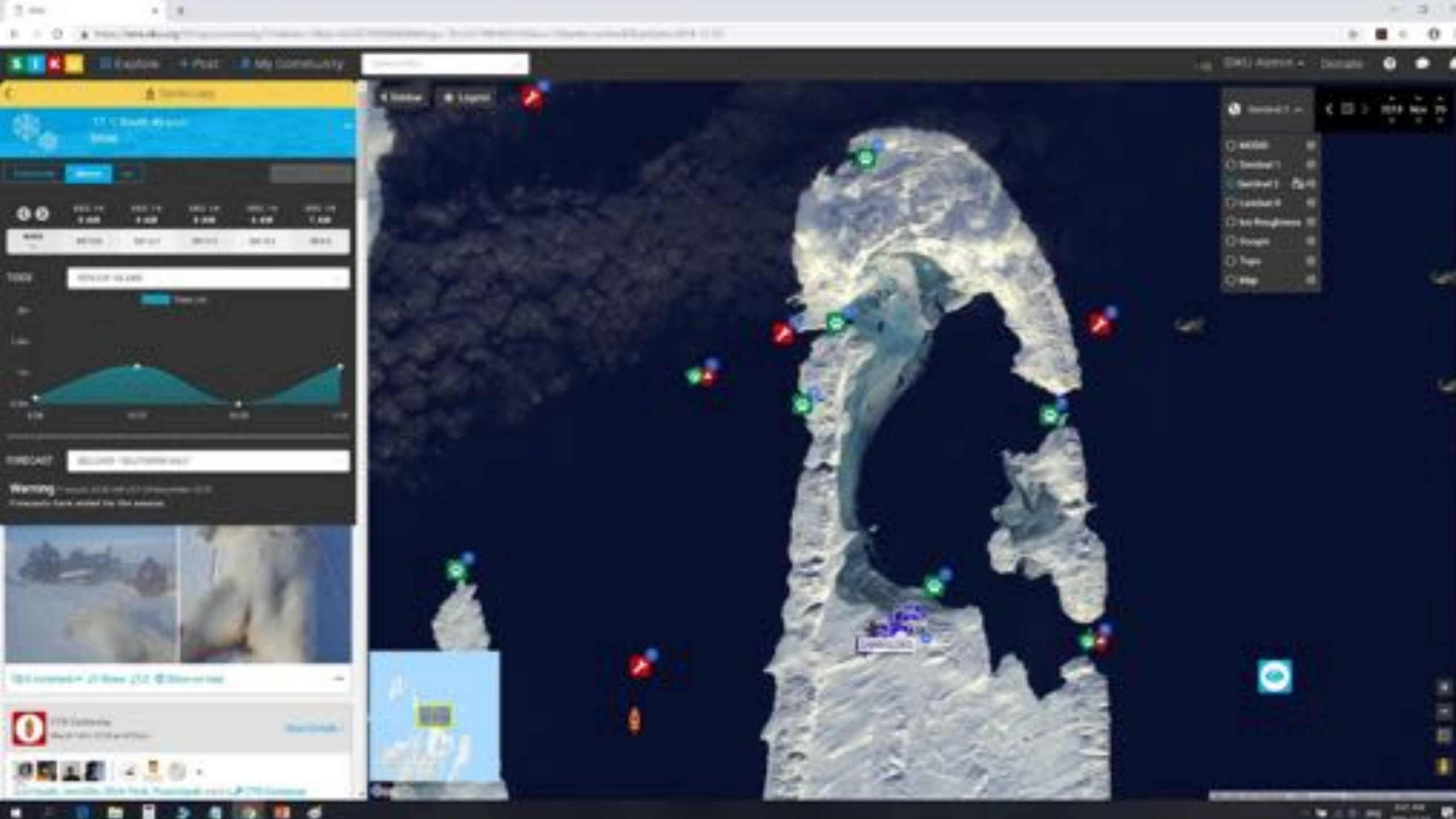
Dashboard: 11.11 South Island

Year	2014	2015	2016	2017	2018
Area	1	1	1	1	1
Count	100	100	100	100	100
...
...
...
...
...

20 likes · 20 views · 20 comments

100 photos





Cambridge Bay

Weather data temporarily unavailable



+ Set My Community Share Add shortcut

Feed Ice Reports About People

Filter

Reset



Dangerous ice

February 26, 2019 at 12:02pm

More Details

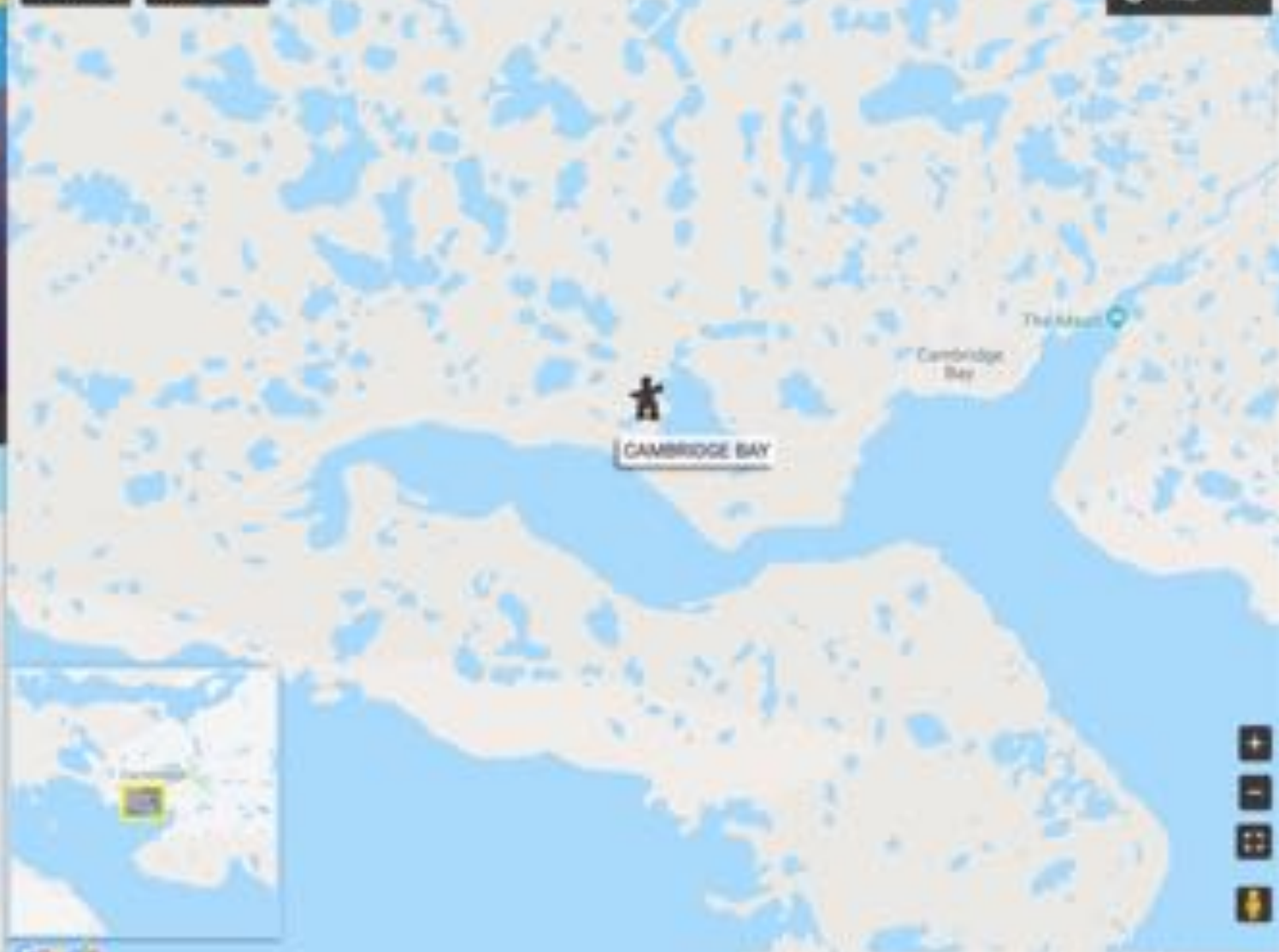


Arctic Eider Education made a Dangerous Ice Observation near Cambridge Bay

0 comment 0 share Show on map

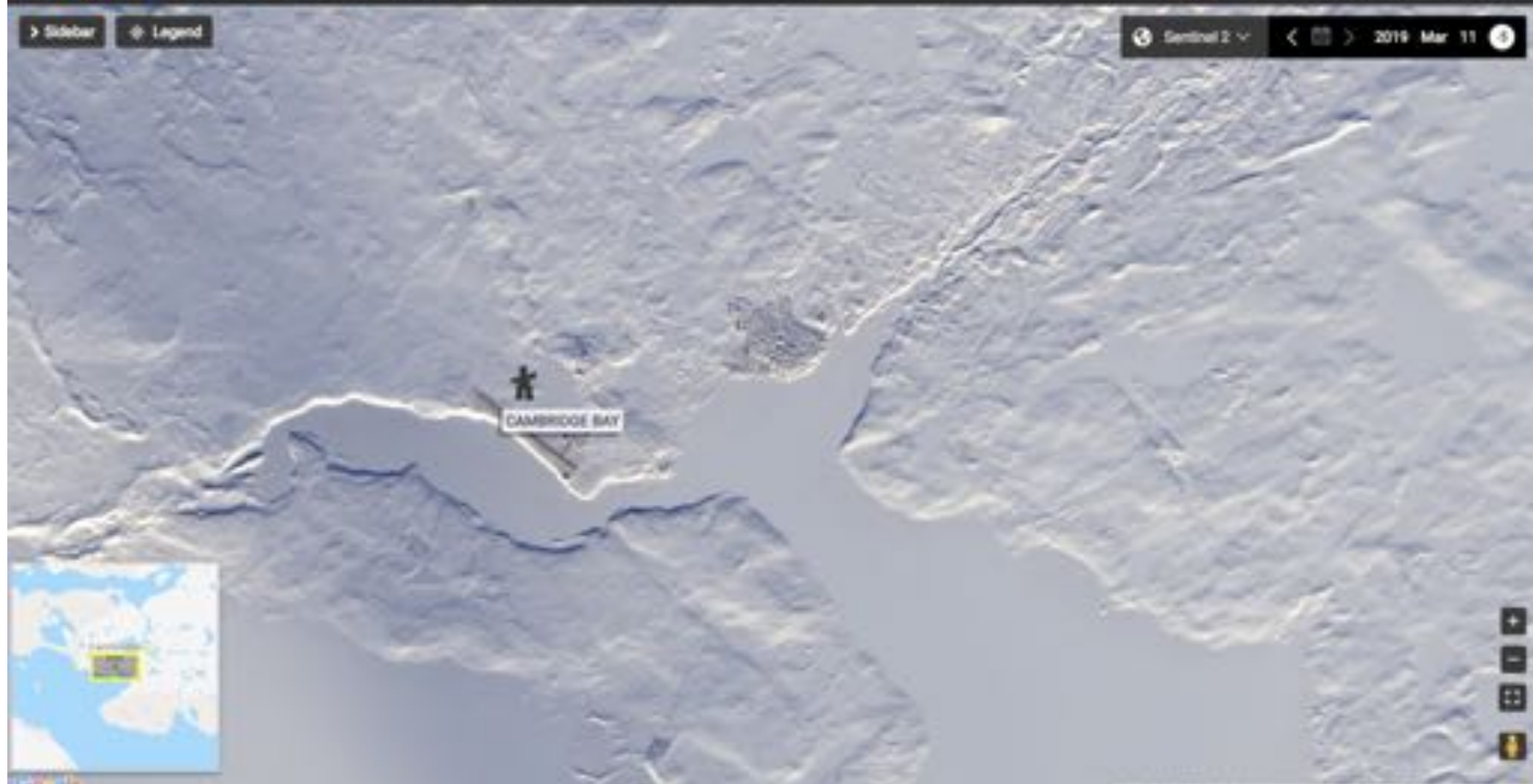
Sidebar Legend

Map

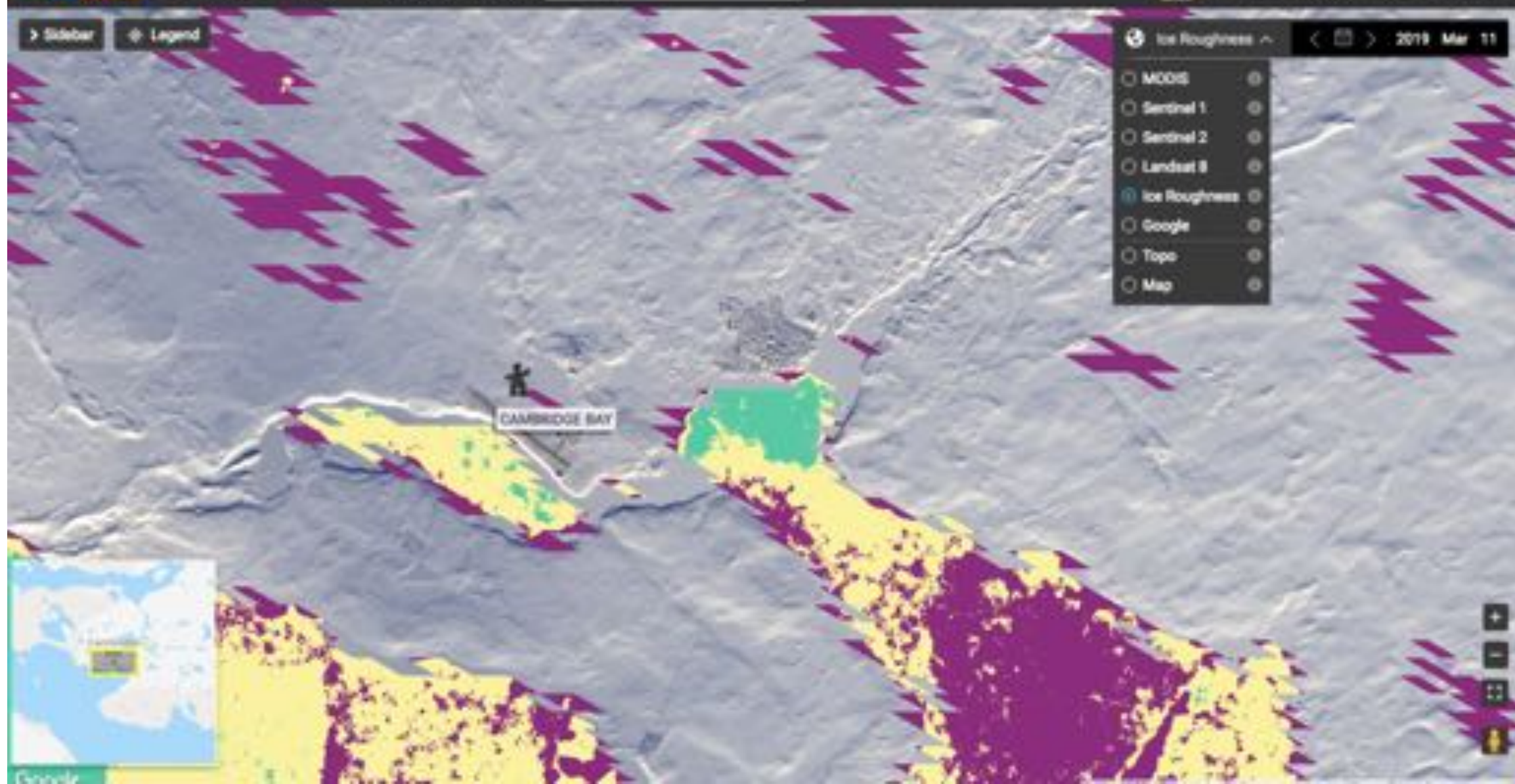


CAMBRIDGE BAY





- MODIS
- Sentinel 1
- Sentinel 2
- Landsat 8
- Ice Roughness
- Google
- Topo
- Map



Dangerous Ice



Comments 0 Share Satellite Show on map


Sigummaq opened up into a flow edge
Southwest wind opened up Sigummaq into a flow edge, do not cross this kind of ice or you could end up on the wrong side of the flow edge

February 11th, 2019 at 04:00 PST

 Johnasie Ippak made a Dangerous Ice Observation ( Sigummaq ) near Sarsilikuaq

 Arctic Eider Society

 SKU Hunting Stories Pilot Project

 Historical Weather

Map interface showing satellite imagery of an icy region. The map includes a sidebar, legend, and navigation controls. A date selector shows 'Sentinel 2' and '2019 Feb 10'. The map displays several green and blue location markers with icons, and a yellow warning icon with a triangle and a blue circle. An inset map in the bottom left shows the location of the main map area within a larger geographical context.

Dangerous ice




Comments 0 Share Satellite Show on map

Sigummaq opened up into a fiord edge
Southwest wind opened up Sigummaq into a fiord edge, do not cross this kind of ice or you could end up on the wrong side of the fiord edge

February 11th, 2019 at 04:00 PST

 [Johnnae \(ppl\)](#) made a Dangerous Ice Observation ([📍 Sigummaq \(P.L.\)](#)) near [Sarsilikuaq](#)

 Arctic Eider Society

 SKU Hunting Stories Pilot Project

 Historical Weather



Trip



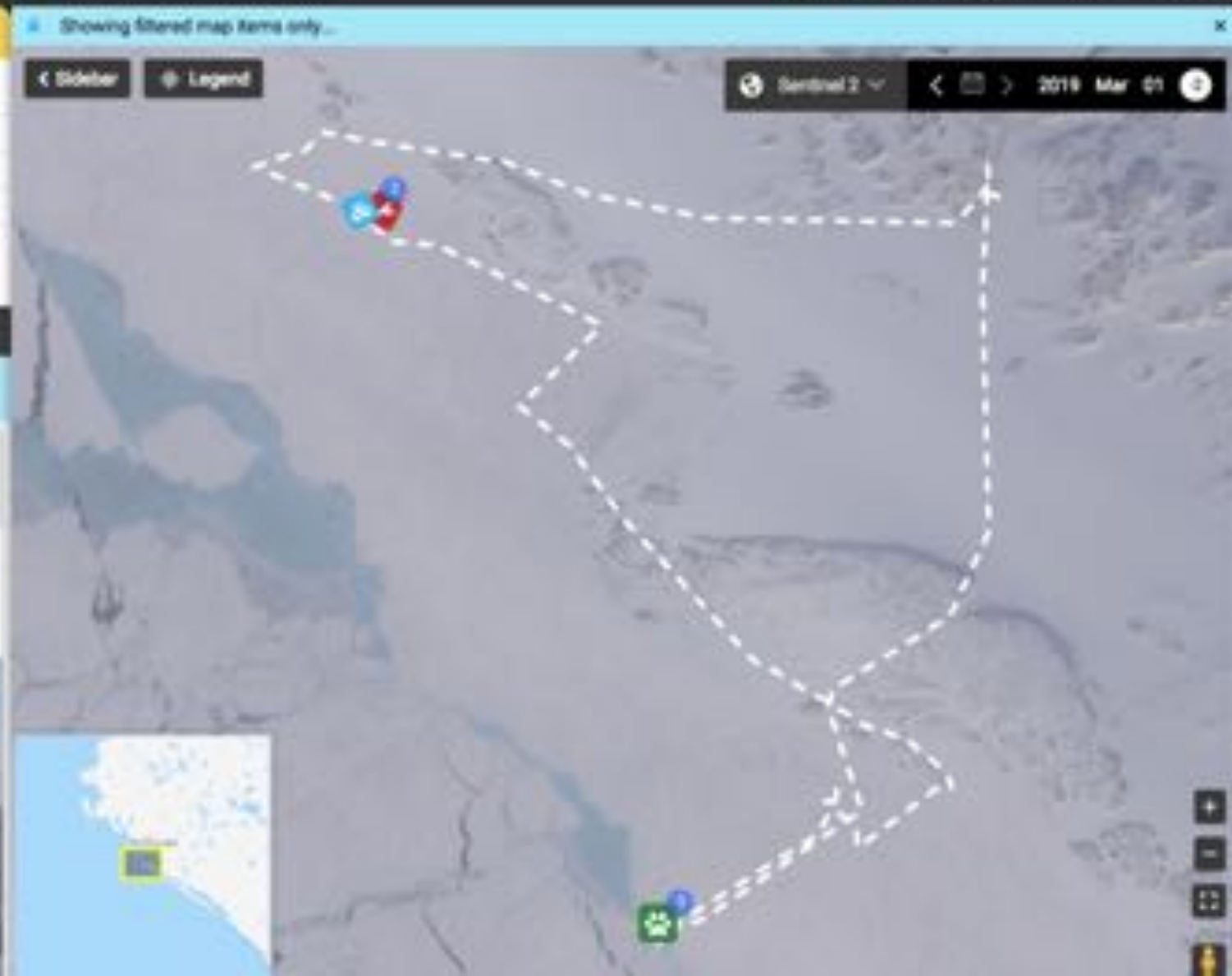
Community	Inukjuak
Date	Feb 22nd, '19 PST
Start Time	2:18 am PST
End Time	10:47 pm PST
Approximate Distance	87km


Share Play Trip Satellite Filter Map Flag


Info

 Winged Seal - Nattiq - a 17th Hunting Story
February 22nd, 2019 at 10:47pm [More Details](#)


Franke Jean Gagnon, Joel Heath, Pauloste Kasofluak hunted a  Winged Seal - Nattiq - a 17th near Inukjuak




 CTD Castaway
February 23rd, 2019 at 8:25am [More Details](#)

 Joel Heath, Frankie Jean-Cagnon, Peulmine Kakufluk, Uliva Kakufluk
used a  CTD Castaway near Inukjuak



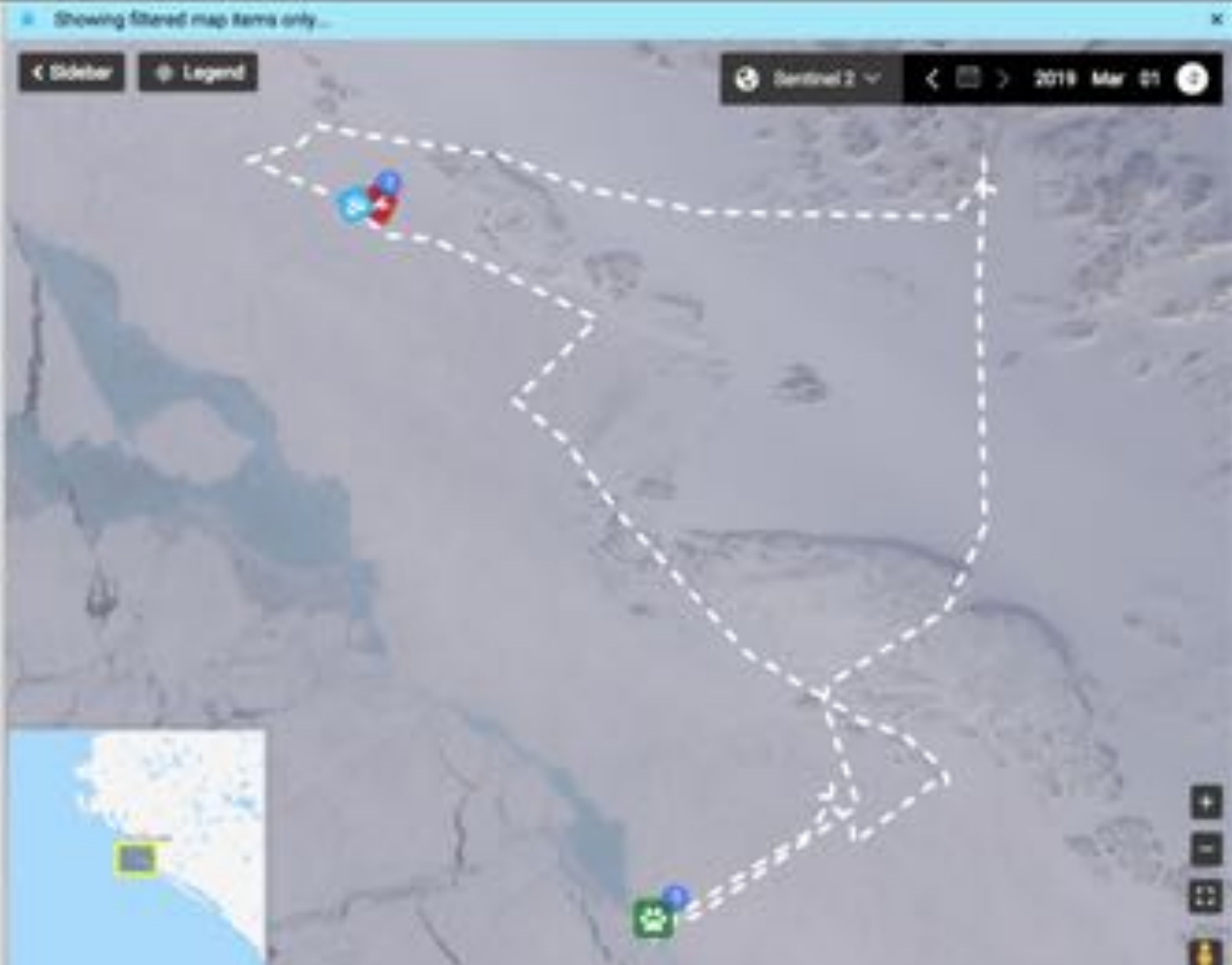
Castaway at a Breathing Hole

 Breathing Hole - Aglu 

 0 comment  0  Share  Show on map

 Ice Observation
February 23rd, 2019 at 8:25am [More Details](#)

 Joel Heath, Frankie Jean-Cagnon, Peulmine Kakufluk
made an Ice



Arctic Fox - Tiriganarjuk - ᐅᐅᐅᐅᐅᐅ



- Vulpes lagopus
- Tiriganarjuk ᐅᐅᐅᐅᐅᐅ

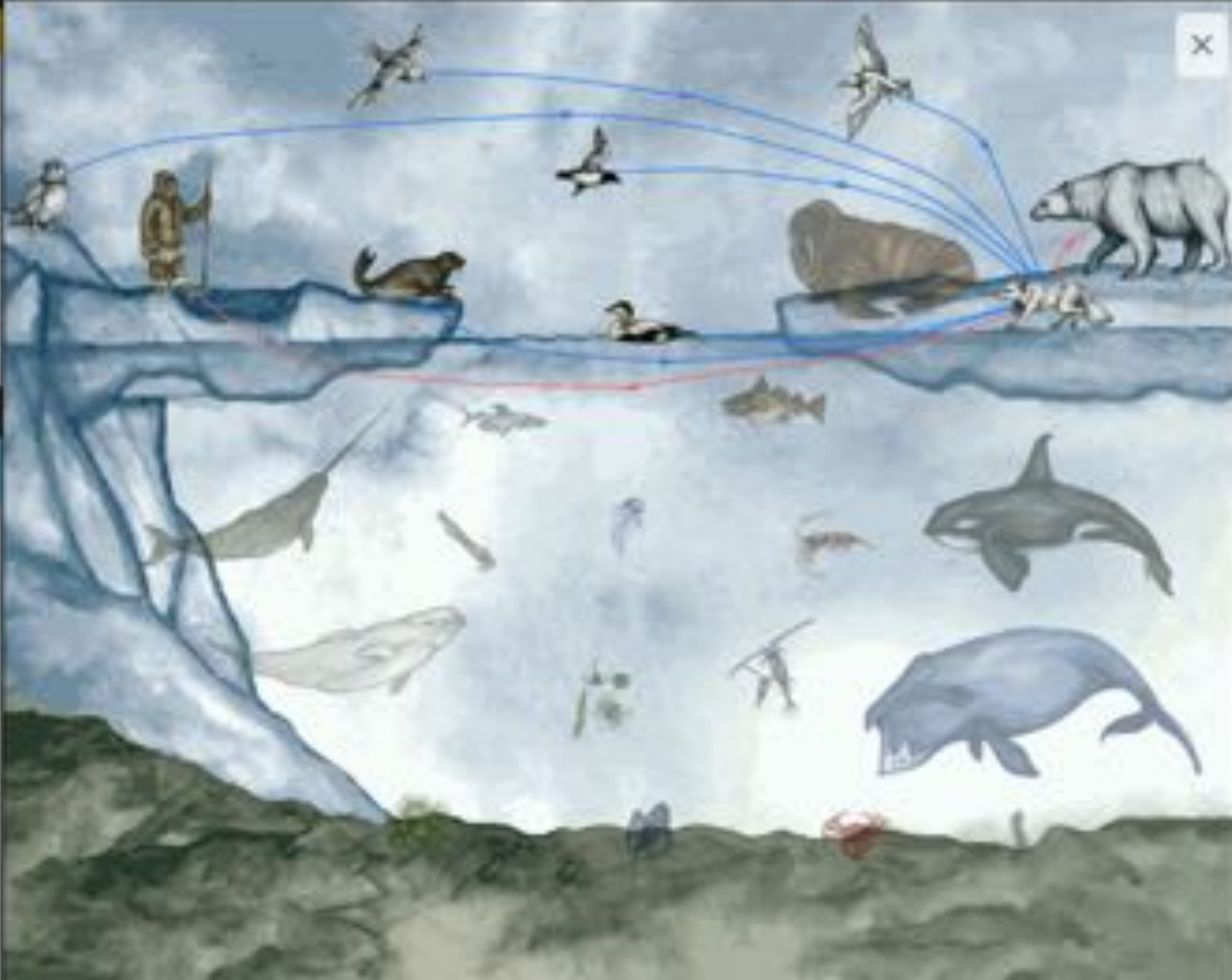
Show Food Web Create Wildlife Observation Add shortcut

Home Feed Photo Guide



Natural History

The Arctic fox sits atop the Arctic Food Web and has adapted to the harsh arctic climate. White in the winter, its fur changes to a grey and brown during the summer. Arctic Fox are predators for smaller creatures like rabbits, birds and fish. When food is scarce they can also be scavengers, following larger hunters like polar's bear and eating their left overs.

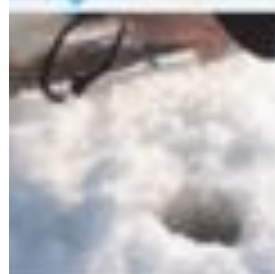


Breathing Hole - Aglu

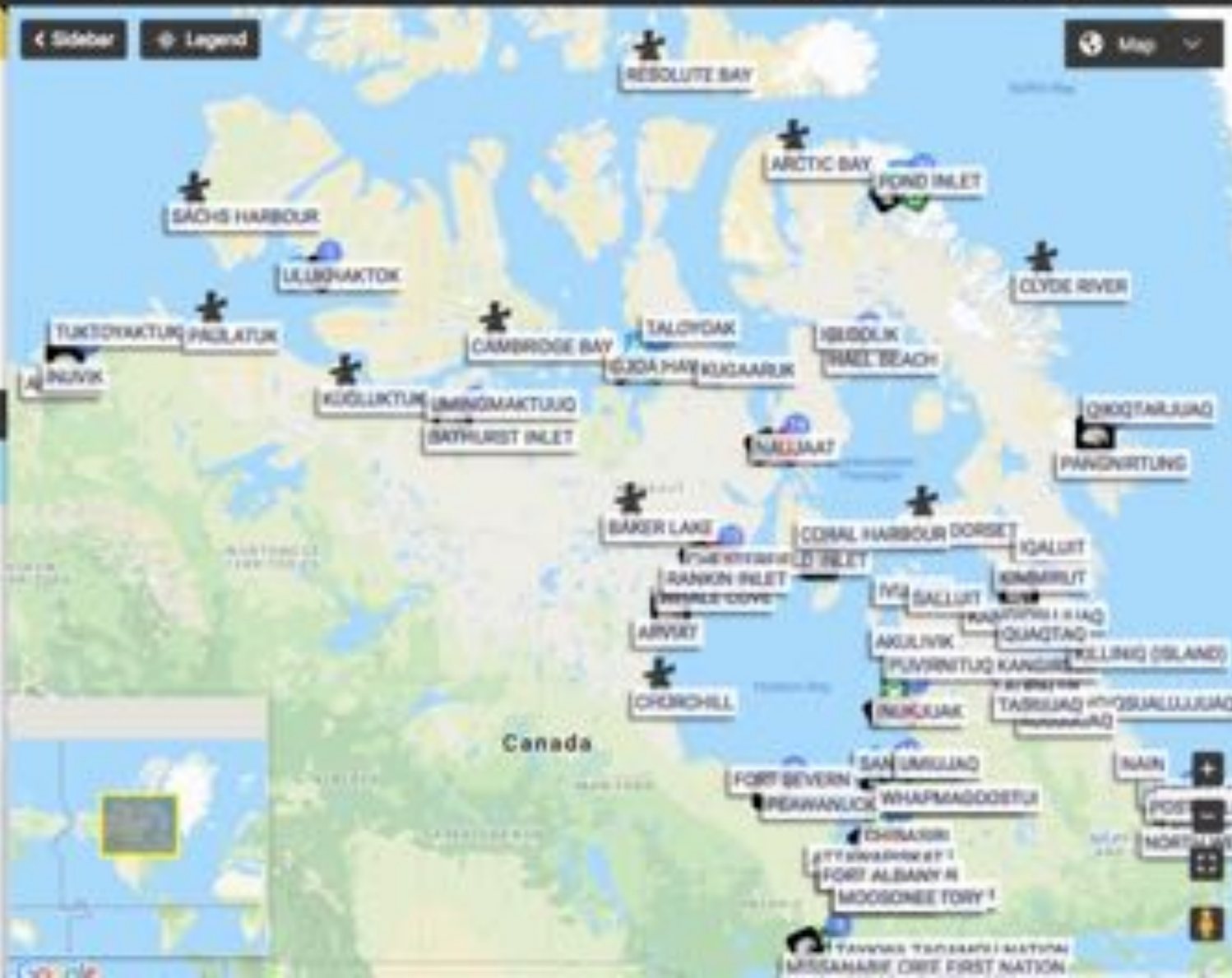


- Breathing Hole
- Aglu

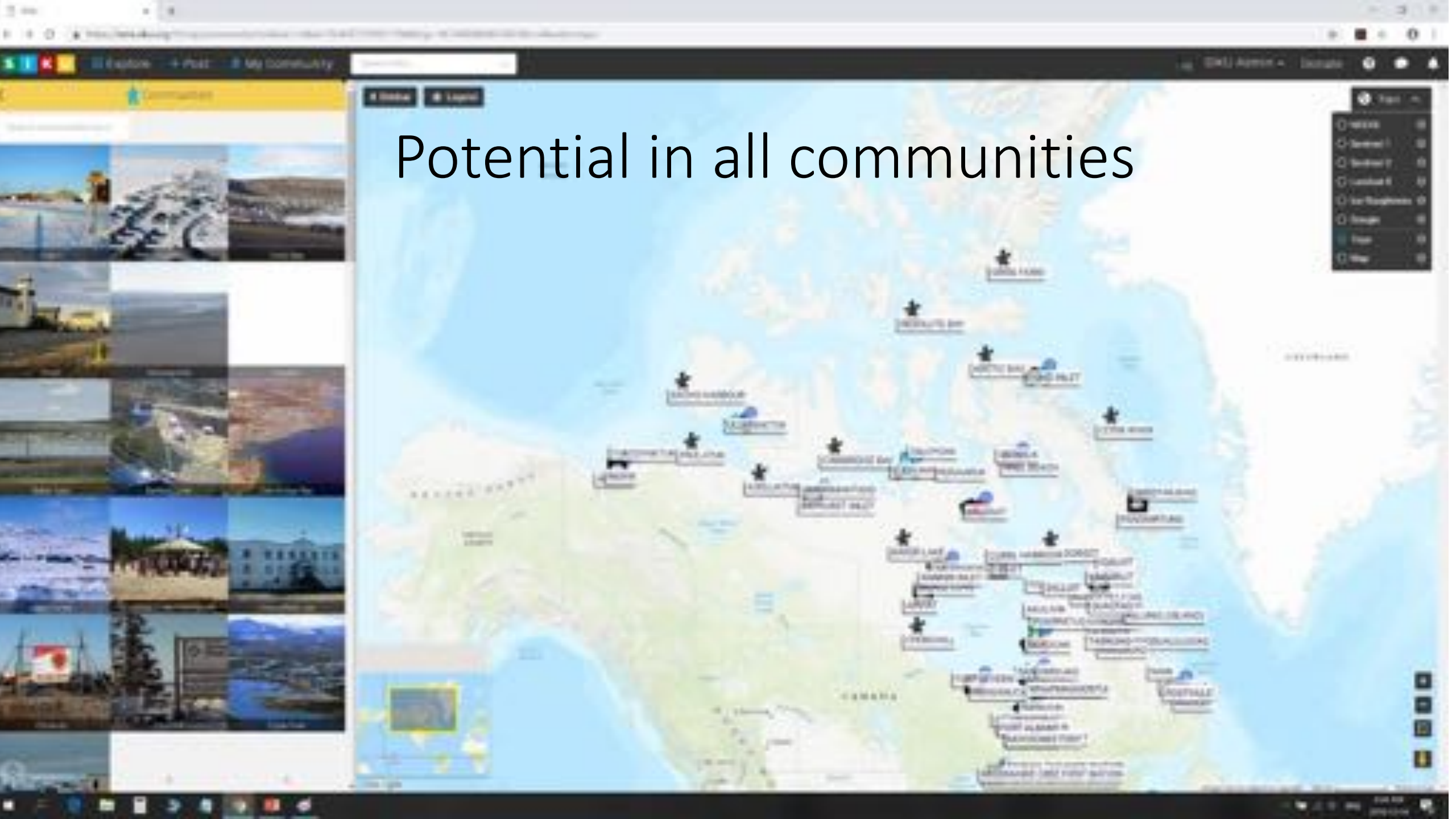
Show Ice Map Create Ice Observation Add shortcut



Seals are mammals and despite spending much of their time hunting and underwater, they still need to breathe. In the winter when much of the sea freezes over, seals use their sharp claws to make holes in the ice to facilitate breathing. While necessary for survival, breathing holes are also a liability that the predators such as polar bears and humans exploit. Hunters patiently wait at seal breathing holes with a harpoon or rifle, in the hope that a seal will eventually come to the surface. Based on years of experience, expert hunters know how to safely find breathing holes in the sea ice.



Potential in all communities



SIKU beta tester workshop in Gjoa Haven



Questions



Δοδ^ς ΓΝε⁴ΓΔ

ARCTIC EIDER SOCIETY