

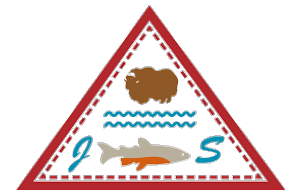
Inuvialuit Leadership in Marine Protected Area Planning and Management

Joe Illasiak¹, Kayla Hansen-Craik², Connie Blakeston³, Shannon MacPhee³

¹Inuvialuit Game Council, ²Inuvialuit Joint Secretariat, ³Fisheries and Oceans Canada

Protection of the Arctic Marine Environment (PAME) 4th Marine Protected Area (MPA) Workshop

19-21 March 2019, Cambridge Bay, Nunavut, Canada

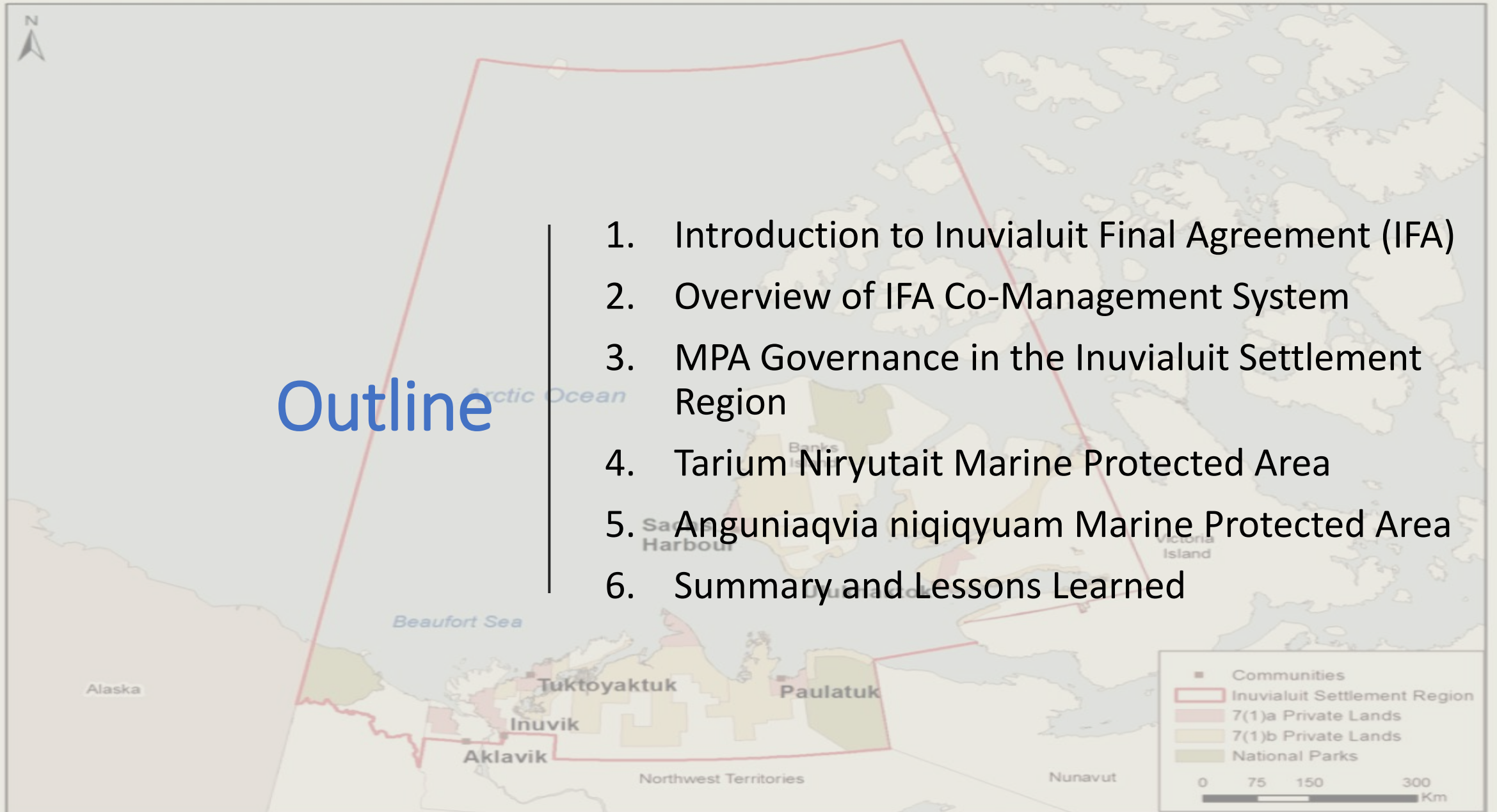


Fisheries and Oceans
Canada

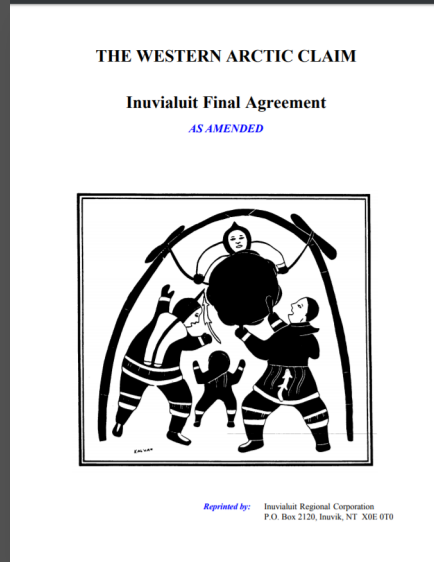


Outline

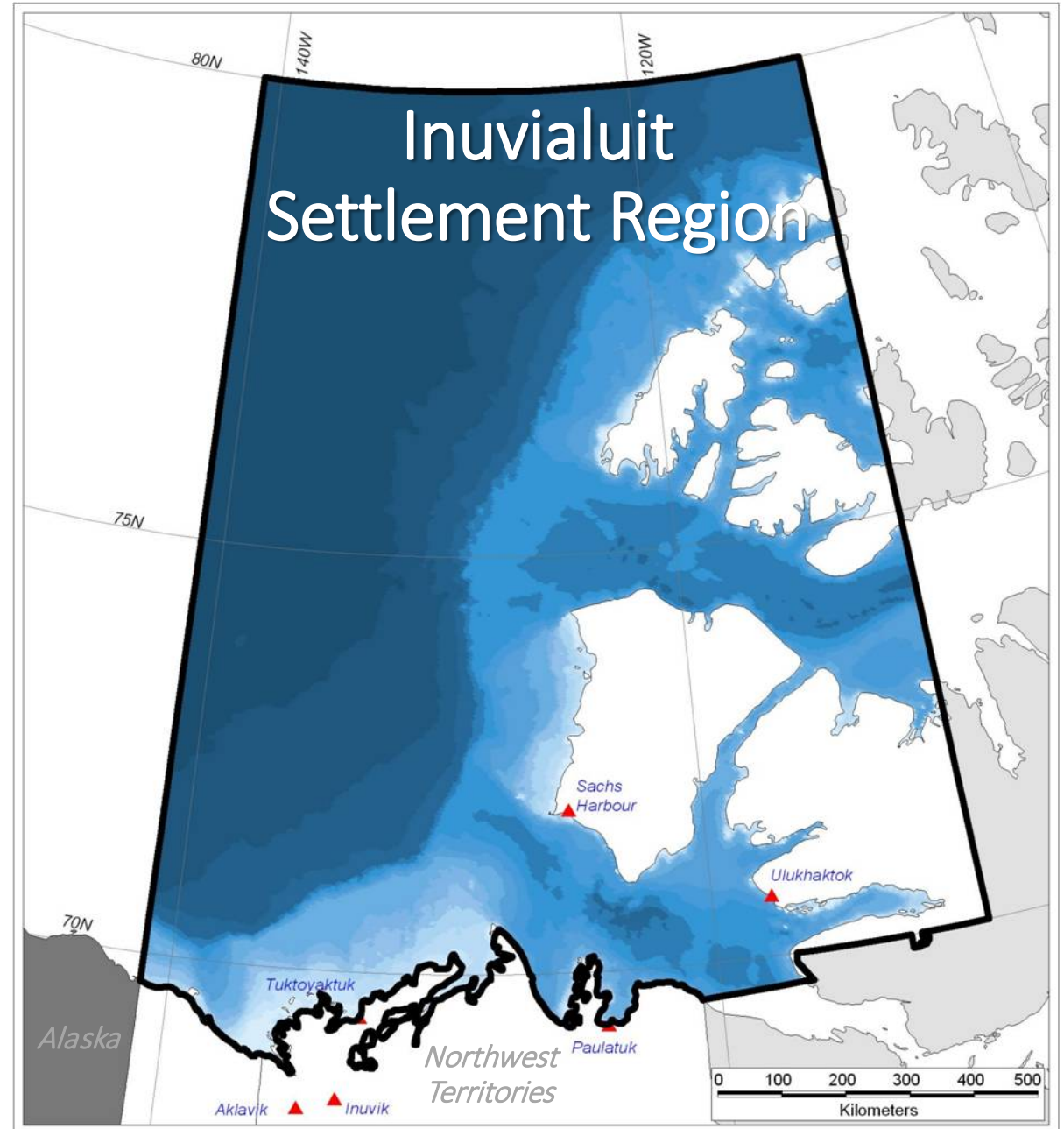
1. Introduction to Inuvialuit Final Agreement (IFA)
2. Overview of IFA Co-Management System
3. MPA Governance in the Inuvialuit Settlement Region
4. Tarium Niryutait Marine Protected Area
5. Anguniaqvia niqiqyuam Marine Protected Area
6. Summary and Lessons Learned

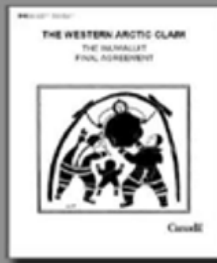


The Inuvialuit Final Agreement



- Modern Land Claim, signed in 1984
- Defined the Inuvialuit Settlement Region
- Guarantees the rights of Inuvialuit in all decision-making and approaches to resource management





The Co-management System

As established in the Inuvialuit Final Agreement



The Joint Secretariat-Inuvialuit Settlement Region provides administrative, technical and logistical support to Inuvialuit Organizations and Co-management Boards.



**Canada's Marine and Coastal Protection
March 2019: 7.92%**

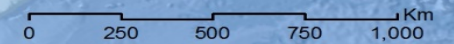
**Protection Marine et Côtière au Canada
mars 2019: 7,92%**



March 2019: 7.92% / mars 2019: 7,92%

- DFO Marine Protected Areas / MPO Zones de Protection Marines
- DFO Marine Refuges / MPO Refuges Marins
- Parks Canada Agency / Agence Parcs Canada
- Environment and Climate Change Canada / Environnement et Changement climatique Canada
- Joint Federal and Provincial / Cogestion fédérale et provinciale
- Provincial / Provincial

Map updated: February 28, 2019 / Carte mise à jour: 28 février 2019

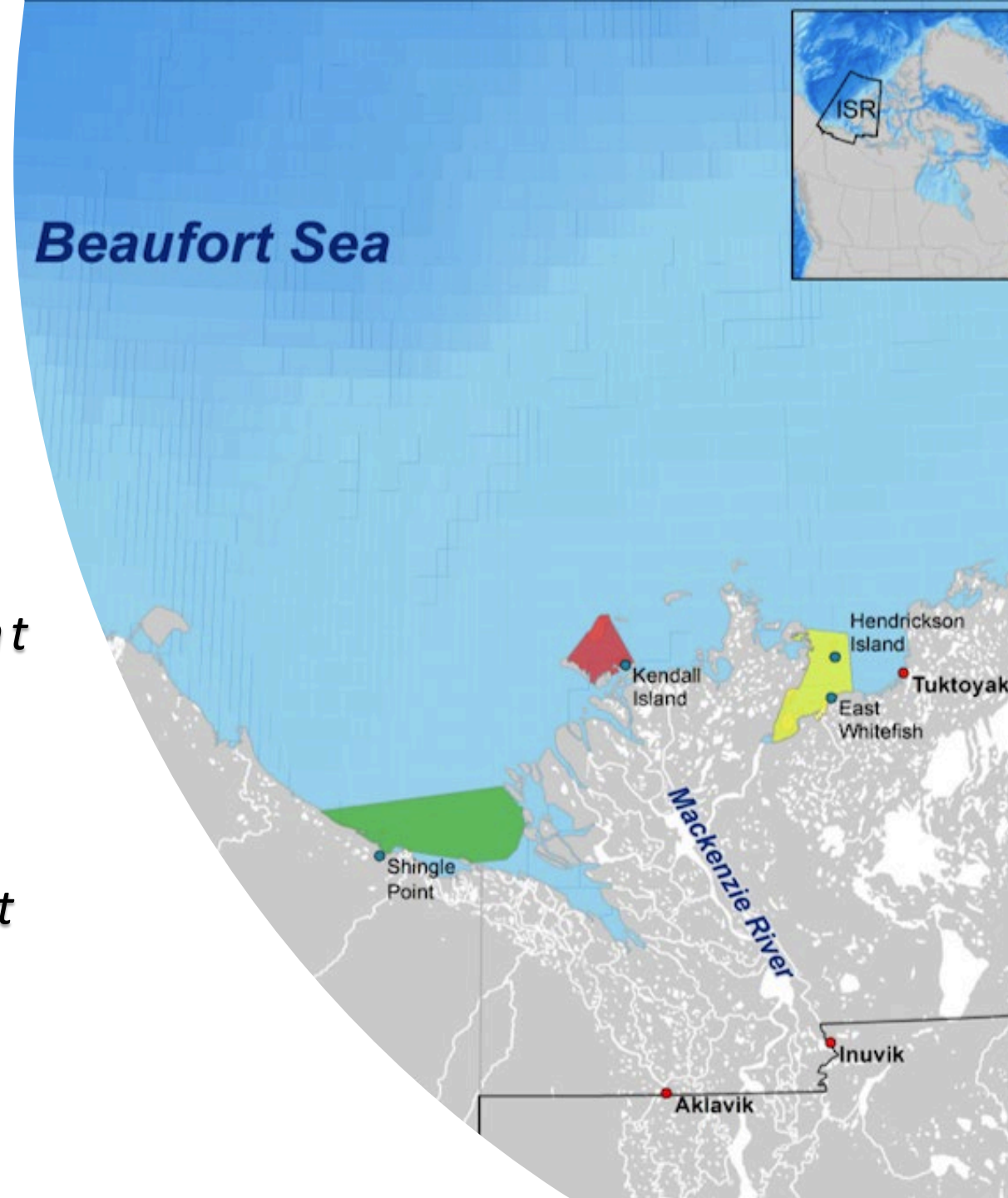


Tarium Niryutait

Canada's First Arctic MPA

MPA boundary based on traditional Inuvialuit beluga harvesting areas and Beaufort Sea Beluga Management Plan

MPA monitoring based on long-term partnership between co-management partners for beluga harvest and harvest-based monitoring



Tarium Niryutait MPA

“To conserve and protect beluga whales and other marine species, their habitats, and their supporting ecosystem”



Photo: B. Browne



Photo: E Couture



Photo: FJMC Archives



Photo: FJMC Archives

Tarium Niryutait MPA

The Beaufort Sea Beluga Management Plan, driven by communities, formed the basis of the spatial boundary of the TN MPA.

Long-term beluga monitoring, operated through the co-management system, formed the core MPA monitoring program.

Relationships built through long-term partnership programs paved the way for co-development of priorities and research programs between harvesters and government.



Tarium Niryutait MPA

Building youth capacity through participation in field programs, laboratory work and conference internships

DFO and FJMC prioritize youth and beneficiary training with the beluga research and monitoring programs. A central focus has been to build capacity in beluga sampling and research among youth interested in science and monitoring. Additionally outside of the field setting many youth had the opportunity to visit research labs and attend various meetings and conferences. Researchers also provided class presentations and seminars at Aurora college and public schools in both the north and south. Youth and monitors have been encouraged to share their knowledge at local, national and international presentations.

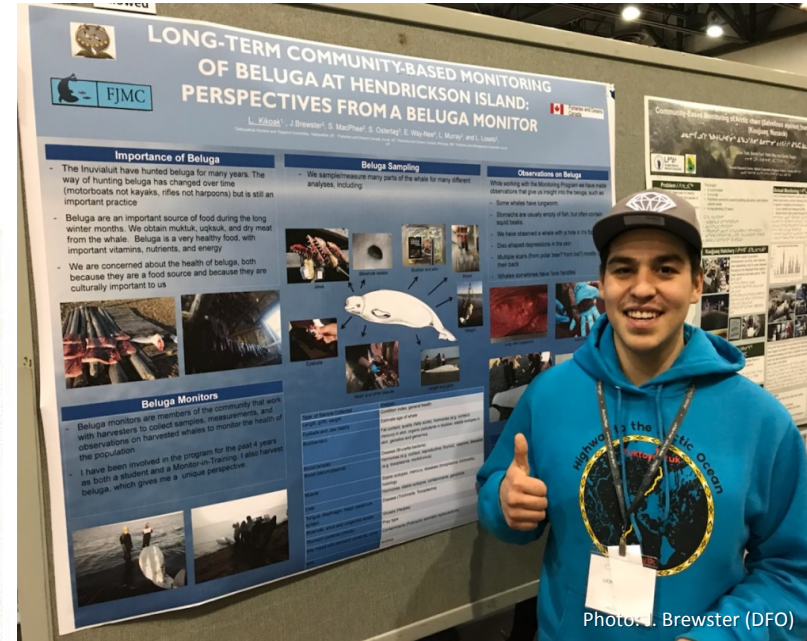


Photo: J. Brewster (DFO)



Photo: M. Nizioł (DFO)



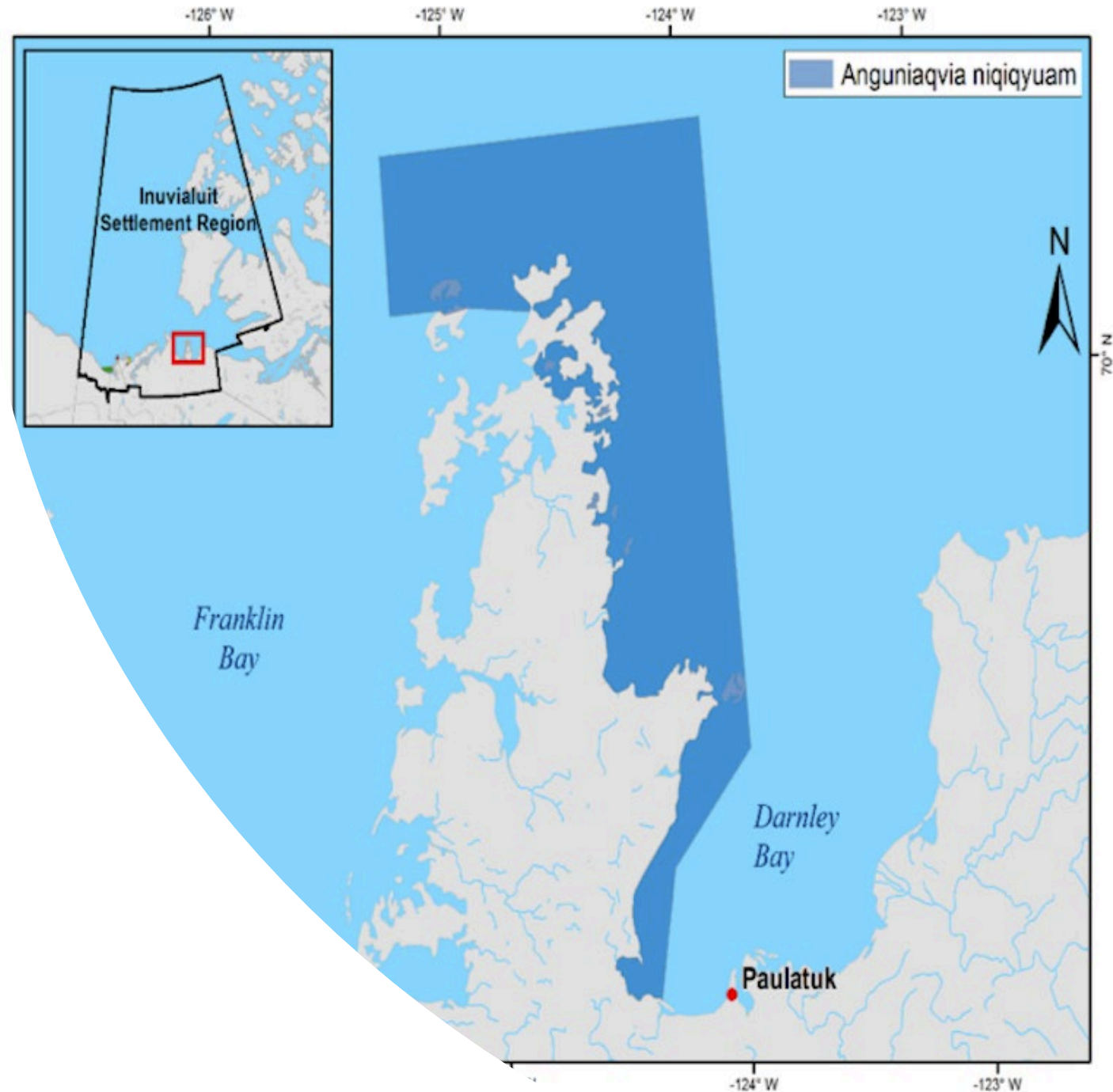
Youth trained since 2004: Andrew Gordon Jr, Brandon Voudrach, Brandon Green, Bessie Ruben, Bernadette Green, Candice Cockney, Cole Felix, Courtney Kikoak, Devalyn Pokiak, Ennyak Sudlovenick, Jasmine Brewster, Jocelyn Nokšana, Kayla Hansen-Craik, Kate Snow, Kendra Tingmiak, Kayla Nuyaviak, Kyle Taylor, Lionel Kikoak, Megan Kimksana, Melanie Rogers, Melanie Wolki, Paden Lennie, Ryan Walker, Rebecca Pokiak, Shaeli Pokiak, Cody Kogiak, Cecilia Greenland, Desiree Arey, Jessi Pascal, Trent Arey, Casandra Greenland, Rylan Green.

Anguniaqvia niqiqyuam

Canada's First MPA with Conservation Objective informed solely by Traditional and Local Knowledge (TLK)

Boundary and Conservation Objective based on both Traditional and Local Knowledge (TLK) and science

Inclusion of TLK in the development of MPA management and monitoring plans and community-level governance structure



Anguniaqvia niqiqyuam

“To maintain the integrity of the marine environment offshore of the Cape Parry Migratory Bird Sanctuary so that it is productive and allows for higher trophic level feeding”

“To maintain the habitat to support populations of key species (such as beluga whales, Arctic char, and ringed and bearded seals)”



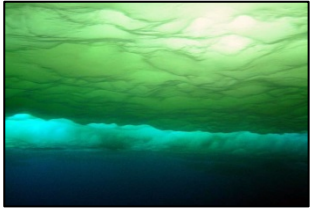
Joe Illasiak (PHTC) – Brown’s Harbour



Community Freezer (PHTC)

Anguniaqvia niqiqyuam

Community leadership in development and implementation of research and monitoring programs



(D. McNicholl, DFO)



Winter baseline assessment with Canadian Ranger Oceans Watch (CROW)



Nearshore Fishes Survey (Photo: D. McNicholl, DFO)



Tony Green Char Monitoring at Tippit (DFO)

Anguniaqvia niqiqyuam

*Youth
capacity-
building*

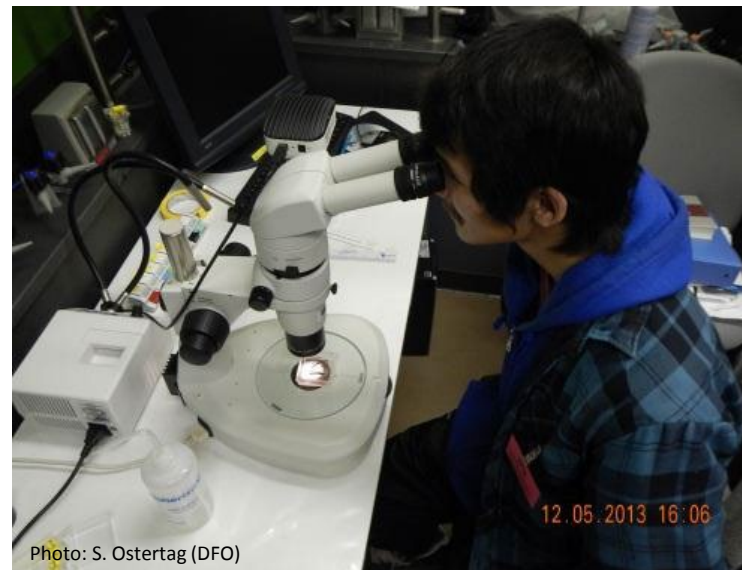


Photo: Paulatuk HTC

MPA Governance in the Inuvialuit Settlement Region...has evolved

REGIONAL

LOCAL (3 communities)

Tarium
Niryutait
MPA
Working
Group

- 1 federal representative
- 1 co-management board rep
- 2 representatives from each of 3 communities
- 1 youth

LOCAL (1 community)

Anguniaqvia
Niqiqyuam
MPA
Working
Group

- 1 federal representative
- 1 co-management board rep
- 4 community representatives
- 1 youth

- *Establishing appropriate governance structures takes time*
- *Shift in the balance of power*

Role of MPA Working Groups

- *Co-design and approve management and monitoring plans*
- *Support implementation of approved management and monitoring plans*
- *Review Activity Plan applications*



TN MPA Working Group, Inuvik, Northwest Territories, Canada.



AN MPA Working Group, Paulatuk, Northwest Territories, Canada.

Community-level Working Groups provide recommendations to the Western Arctic Marine Protected Area Steering Committee (WAMPA) for the on-going planning, management, and monitoring of the MPAs

**Conservation Objective,
Ecological Overview,
Boundary Delineation**

MPA is designed based on a Conservation Objective based on ecological information of the area

For each MPA, DFO identifies monitoring indicators, protocols, and strategies through a peer-reviewed science process

Identify Monitoring Protocols, Indicators & Strategies

Management Lifecycle of an Oceans Act MPA

Adaptive Management

Results of monitoring may indicate management actions are producing the desired effects OR identify need for adaptive management measures

Monitoring of indicators provides for a monitoring baseline, an important reference for Conservation Objectives

Establish Baselines and Monitor

Monitoring of indicators track the State of the MPA and help determine if the MPA is effective in achieving its Conservation Objective

Reporting on State of the MPA



2019 Co-design Workshop: Harpoon-deployed Tag - INNOVATION

Community-driven research priorities



Regular meetings w/co-management boards

ISR-wide public HTC meetings



Co-design process with Inuvialuit communities, co-management partners & scientists

ISR-wide public HTC meetings



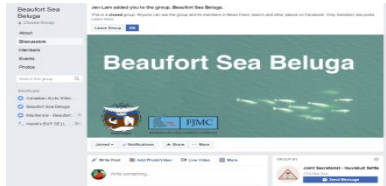
Field program & co-innovation



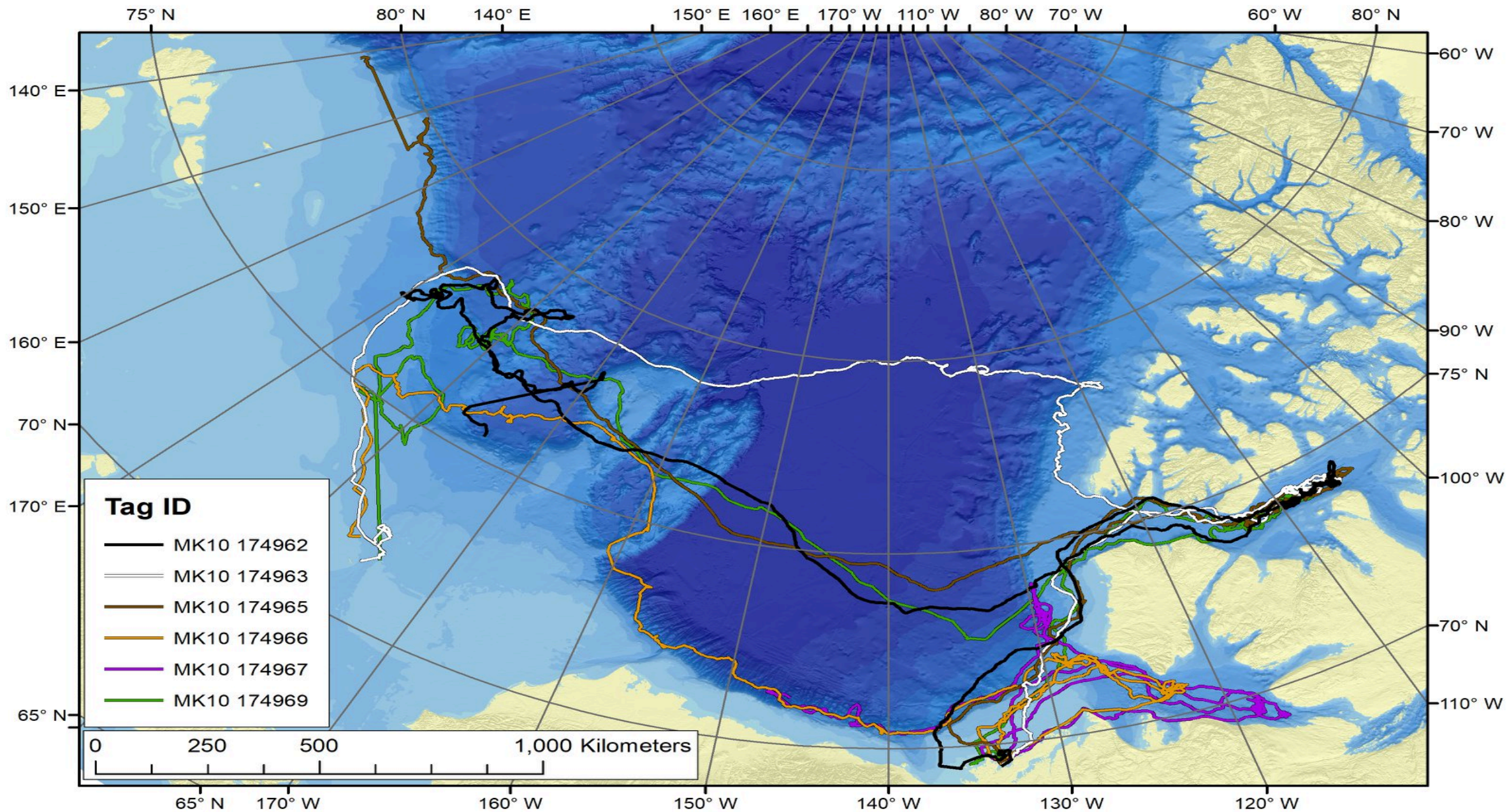
Tagging Advisory Group ('TAG')

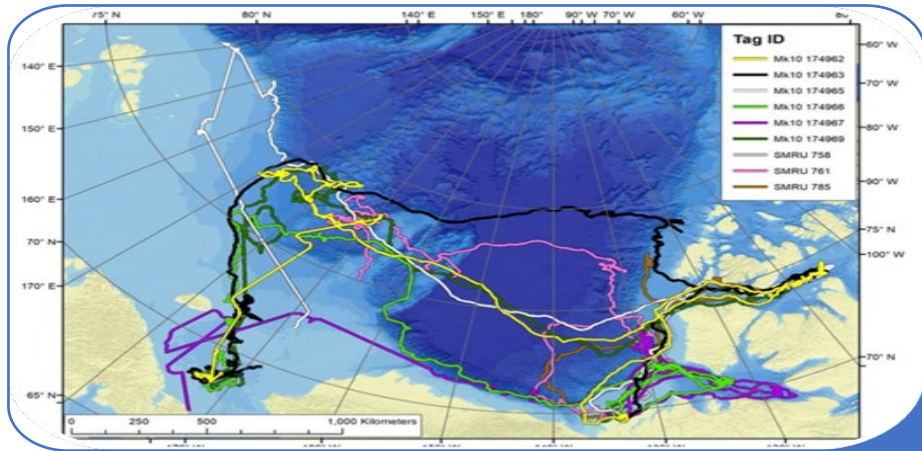


Communications Plan

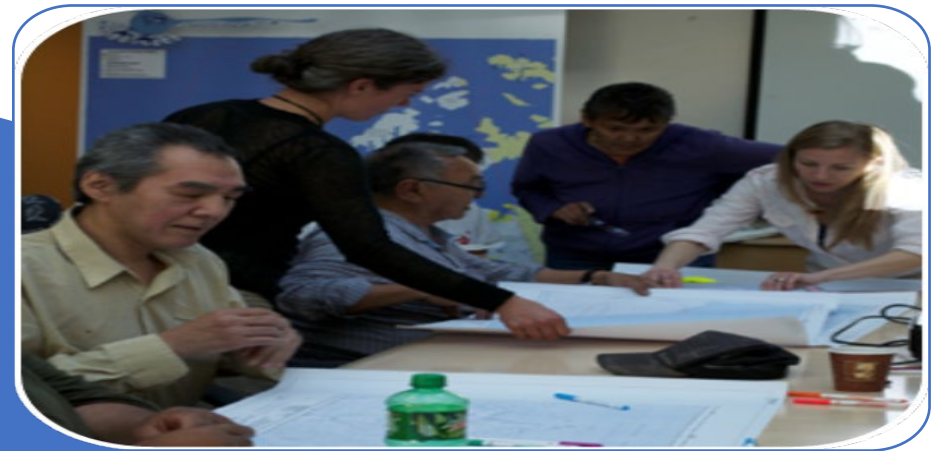


Co-design Workshop: Animal Use Protocol





Telemetry

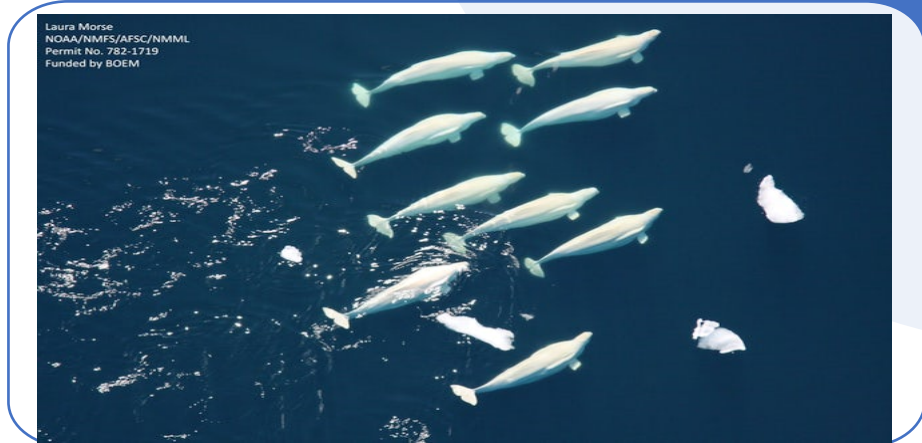


Traditional Knowledge

**Co-interpret,
Learn more
together**

Aerial Survey

Local Observations



A Few Lessons Learned for Best Practice



- *Land claim establishes the rights of Inuvialuit in decision-making related to wildlife*
- *Area-based conservation tools provide enhanced protection for species of cultural and subsistence value – for healthy communities and food security*
- *Communities must be engaged at all stages in the MPA management cycle*
- *Community-level governance structures are needed to ensure local perspectives are meaningfully included in the MPA management cycle*
- *Meaningful engagement requires time, respect, and establishing relationships*
- *“Research economy” must meaningfully include Inuvialuit address community priorities*
- *Federal conservation initiatives must provide sufficient local and regional capacity to support meaningful participation by Inuvialuit in the MPA life cycle (funding for governance structures, education/training, employment, etc.)*