



Designing network of MPA in the Russian Arctic to support ecosystem resilience.

Irina Onufrenya



Before support resilience.....

MPA Network should be build.



Resilient

to/for what?

- Biodiversity loss:
 - species
 - ecosystems/seascapes
 - processes/services?
- Nature use and anthropogenic impact?
- Governance?
- Climate change?

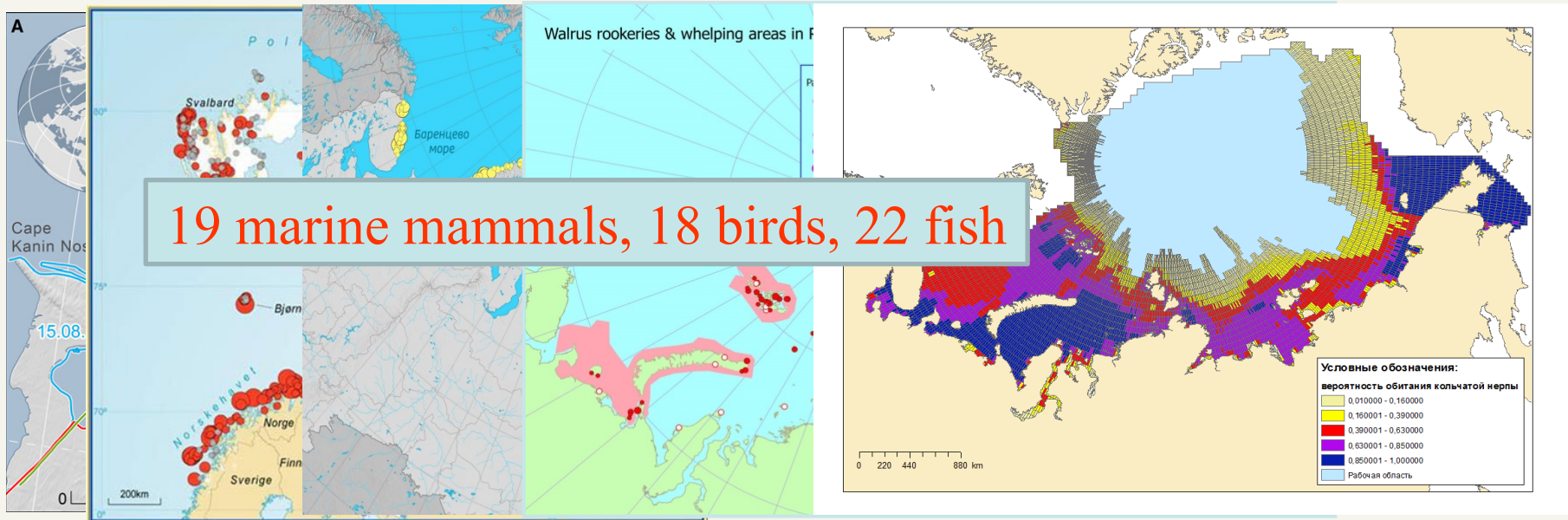
how to manage?

- MPAS
- Other areas
- Efficiency
- Management
- Governance

Resilient to/for Biodiversity loss

Species representation and sufficiency

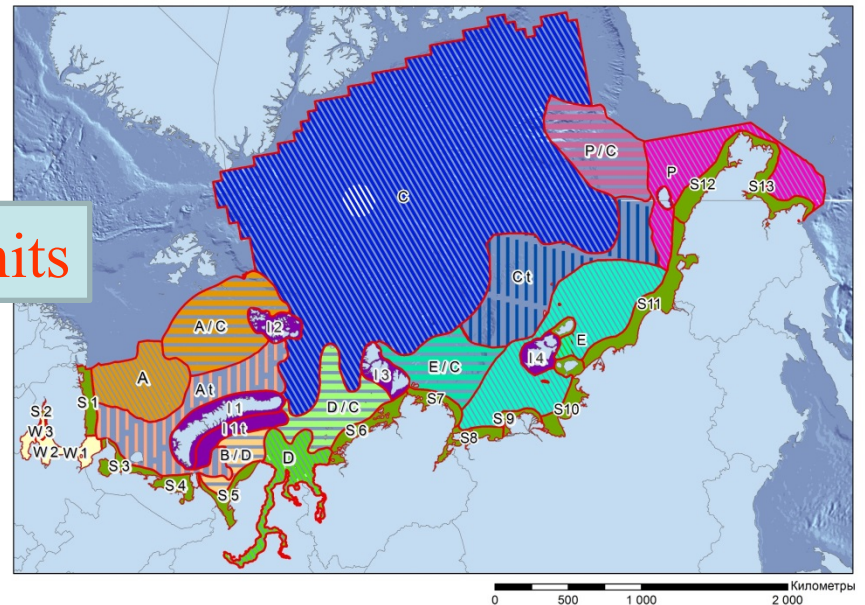
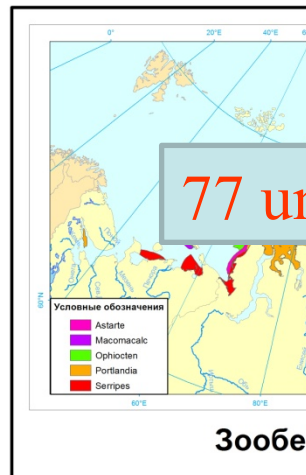
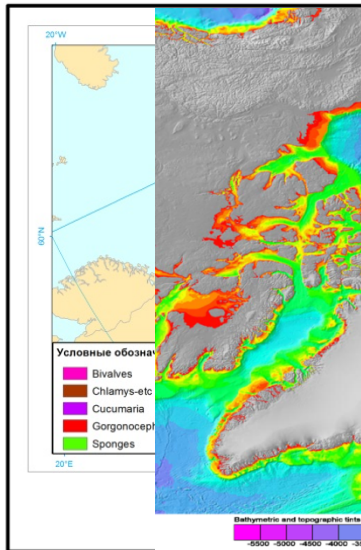
- Uniqueness or rarity
- Genetic diversity
- All levels of trophic pyramid
- Vulnerability, fragility, sensitivity, or slow recovery
- Special importance for local people/ industrial fishing...



Resilient to/for Biodiversity loss

Ecosystems/communities representation and sufficiency

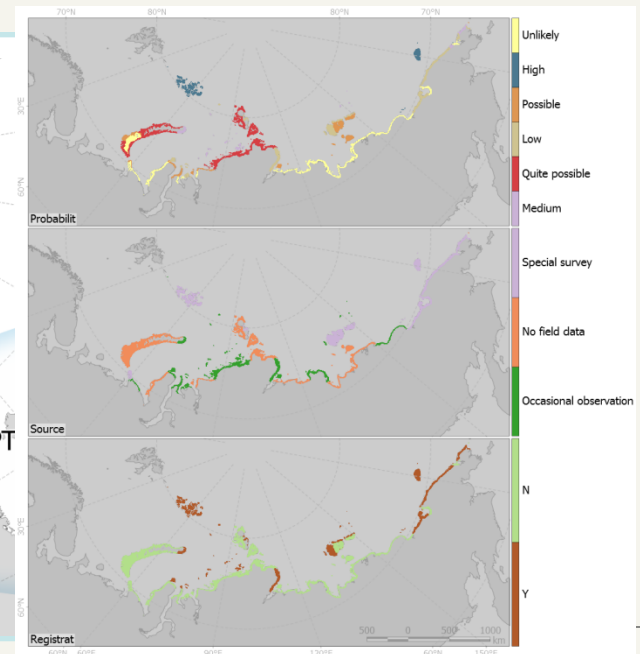
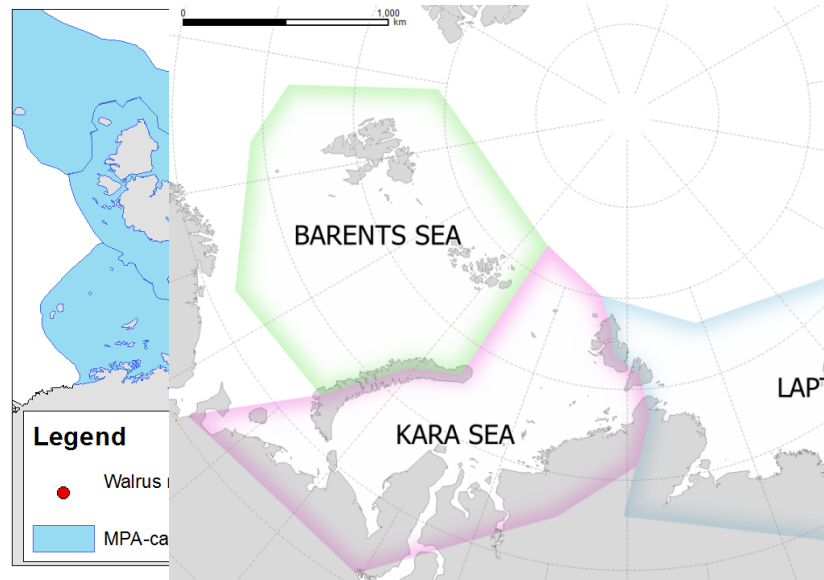
- Biogeographical units
- Biological productivity / diversity
- Benthic/Pelagic biotopes
- Vulnerable marine ecosystems...



Resilient to/for Biodiversity loss

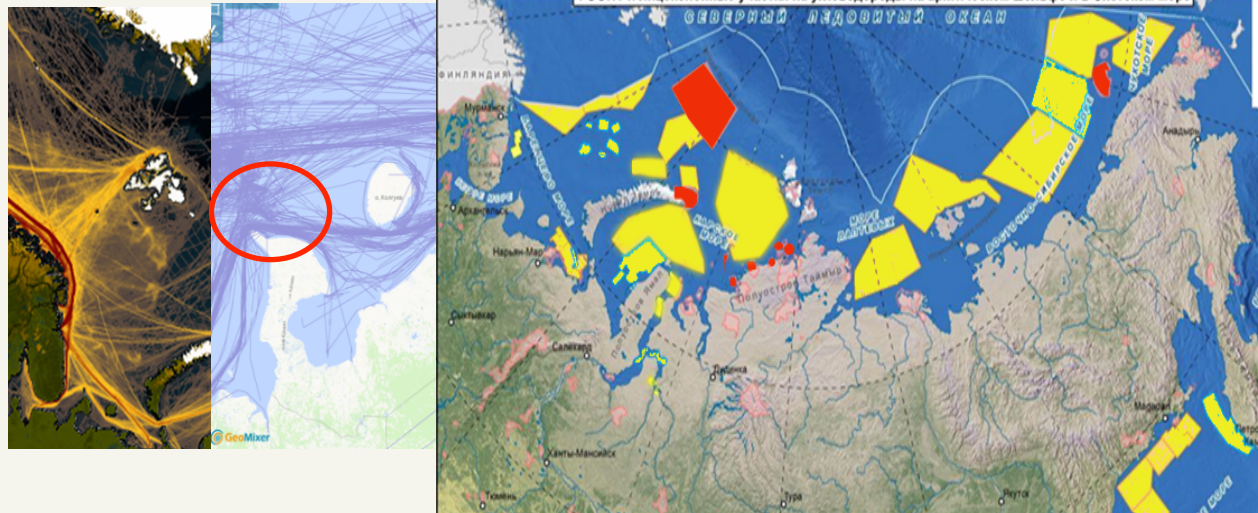
Processes/services

- Geographical connectivity
- Ecological (ecosystem) connectivity
- Special importance for life history stages of species ...



Resilient to/for Nature use and anthropogenic impact

- Local communities surviving
- Industrial fishing
- Current and potential threats and conflicts caused by development:
 - Oil & Gas industry and infrastructure
 - Shipping
 - Fishery and aquaculture
- Tourism
- Military activities





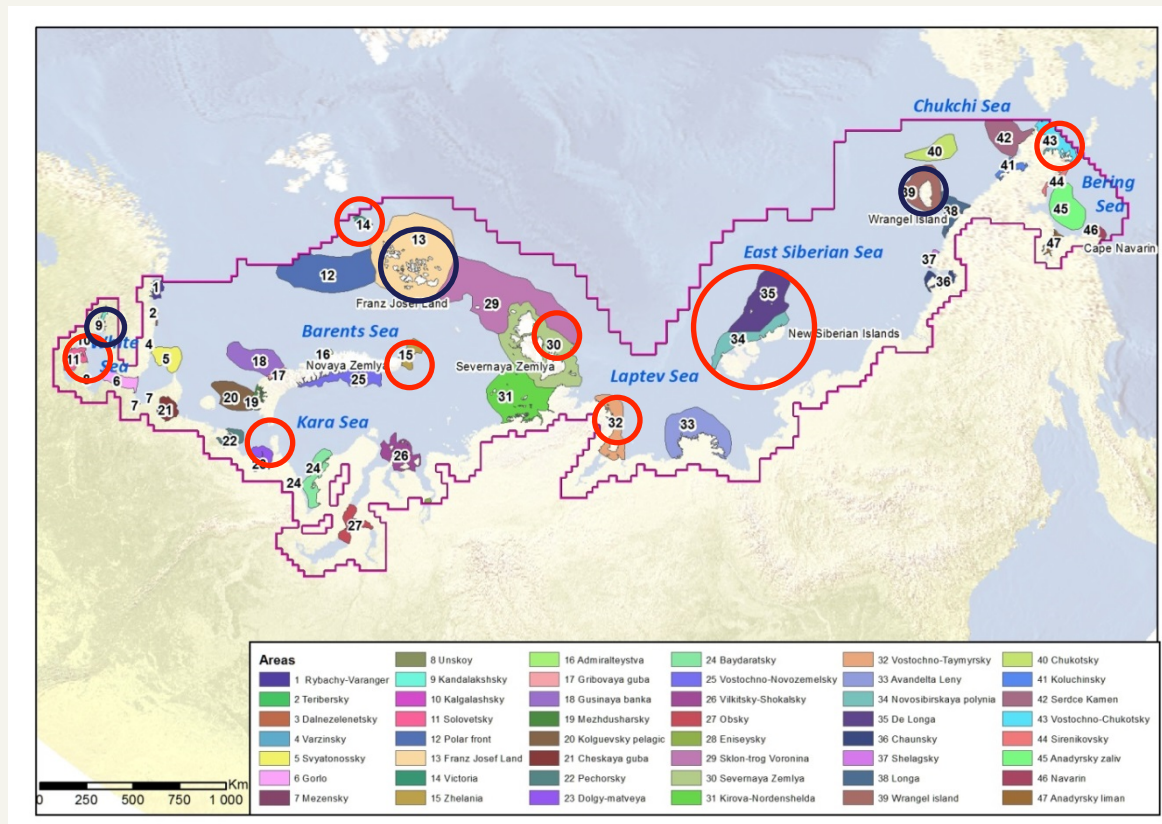
Resilient to Governance

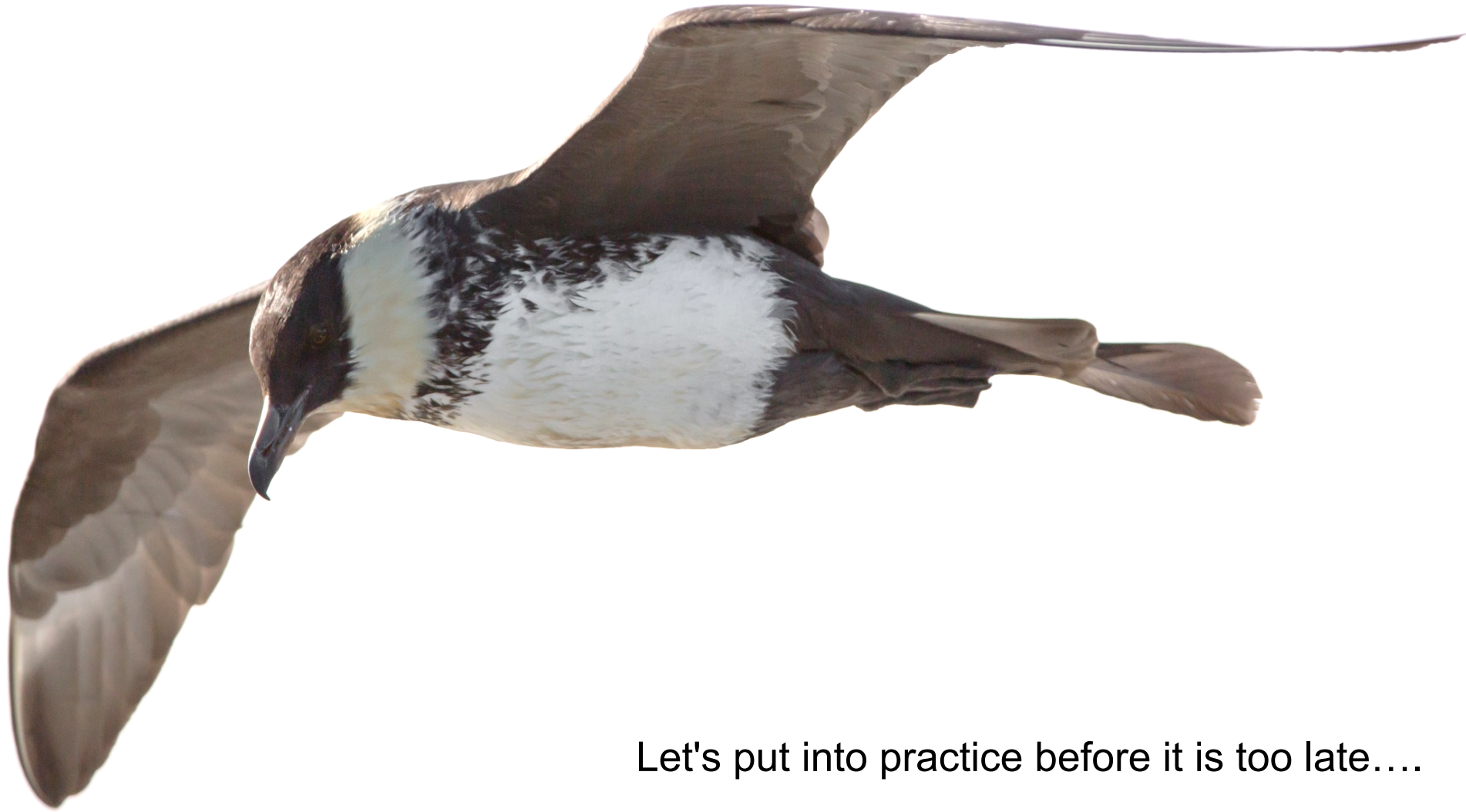
- Precautionary approach with MPA creation
- Be sure that a conservation feature is protected in more than one Protected Area



How to manage Network to support resilience

Thinking about Network management as a system:
representation, connectivity, sufficiency
and not only individual areas management





Let's put into practice before it is too late....