

**Chukchi  
Sea**

**Qikiqtarḡmiut**

**Kuḡmiut**

**Kotzebue  
Sound**

**ḡḡaḡmiut**

**Pittaḡmiut**

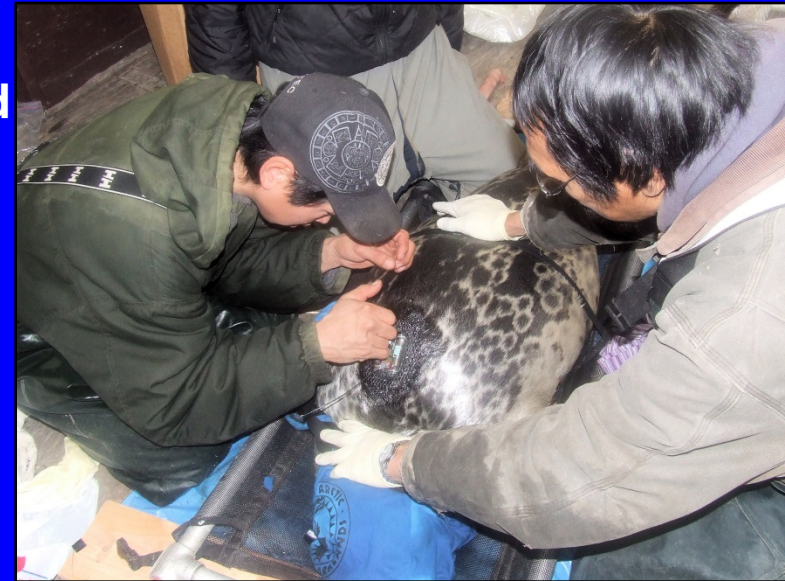
**Kaḡiḡmiut**



**Diving Behavior, Habitat Use, and Movements of Bearded Seal (*Erignathus barbatus*) Pups in Kotzebue Sound, the Bering and Chukchi Seas**



**Wintering Areas and Habitat use of Ringed Seals in Kotzebue Sound, Alaska:  
A Community-based Study**



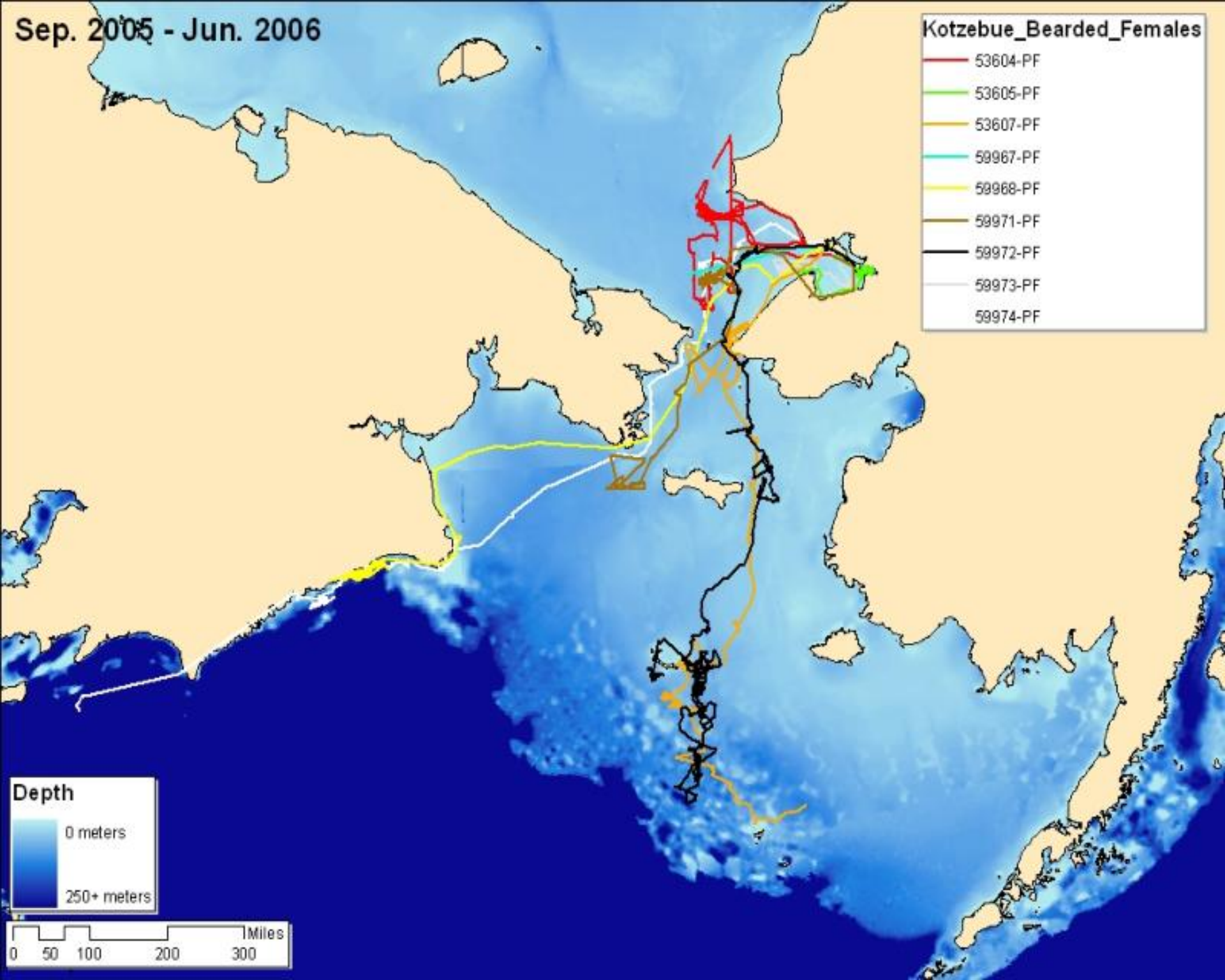
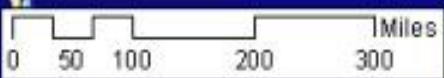
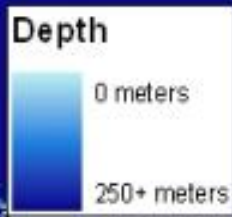
**Habitat use and seasonal movements of adult and sub-adult bearded seals in Kotzebue Sound, Alaska**





Sep. 2005 - Jun. 2006

- Kotzebue\_Bearded\_Females**
- 53604-PF
  - 53605-PF
  - 53607-PF
  - 59967-PF
  - 59968-PF
  - 59971-PF
  - 59972-PF
  - 59973-PF
  - 59974-PF



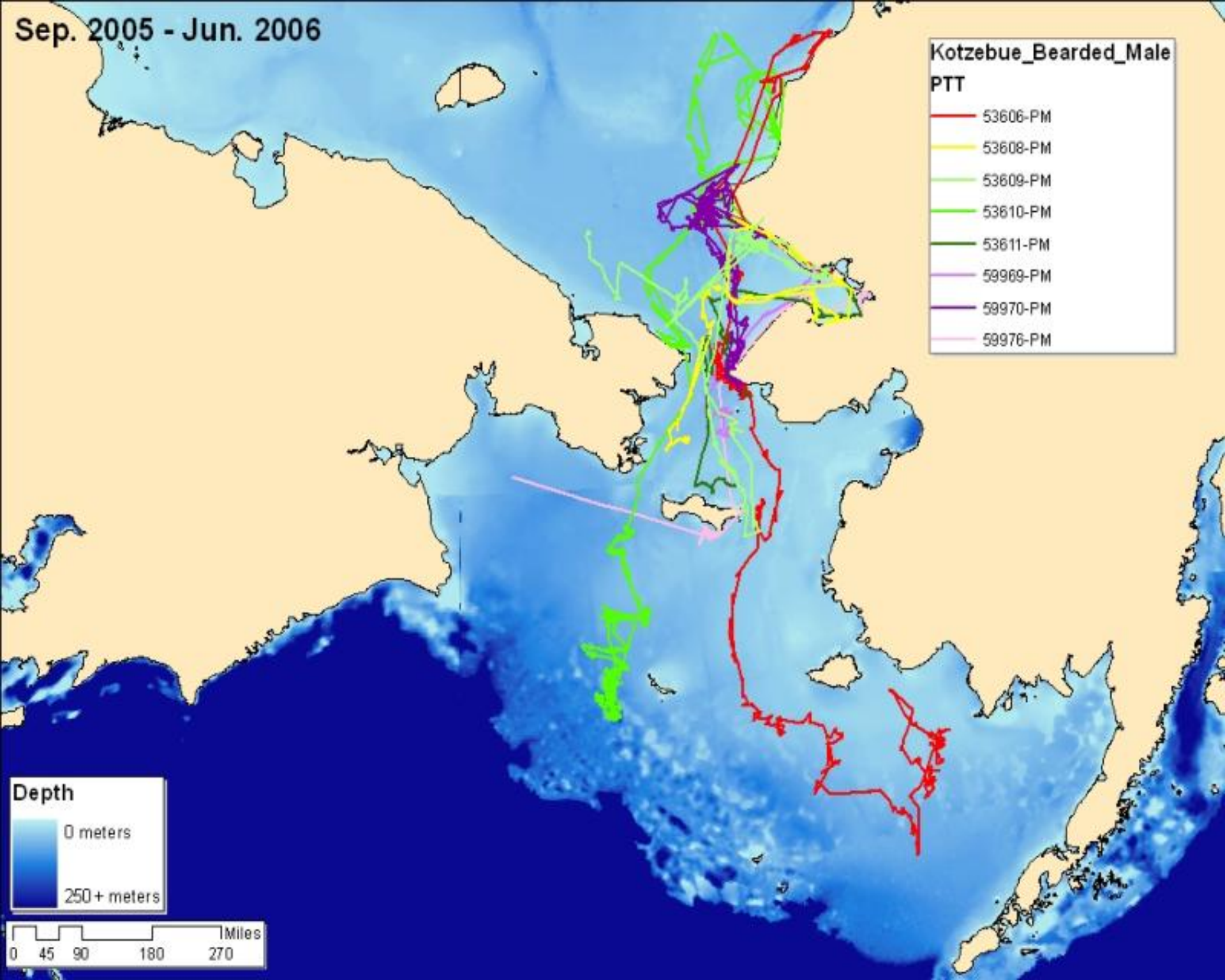
Sep. 2005 - Jun. 2006

**Kotzebue\_Bearded\_Male**  
**PTT**

- 53606-PM
- 53608-PM
- 53609-PM
- 53610-PM
- 53611-PM
- 59969-PM
- 59970-PM
- 59976-PM

**Depth**

- 0 meters
- 250+ meters

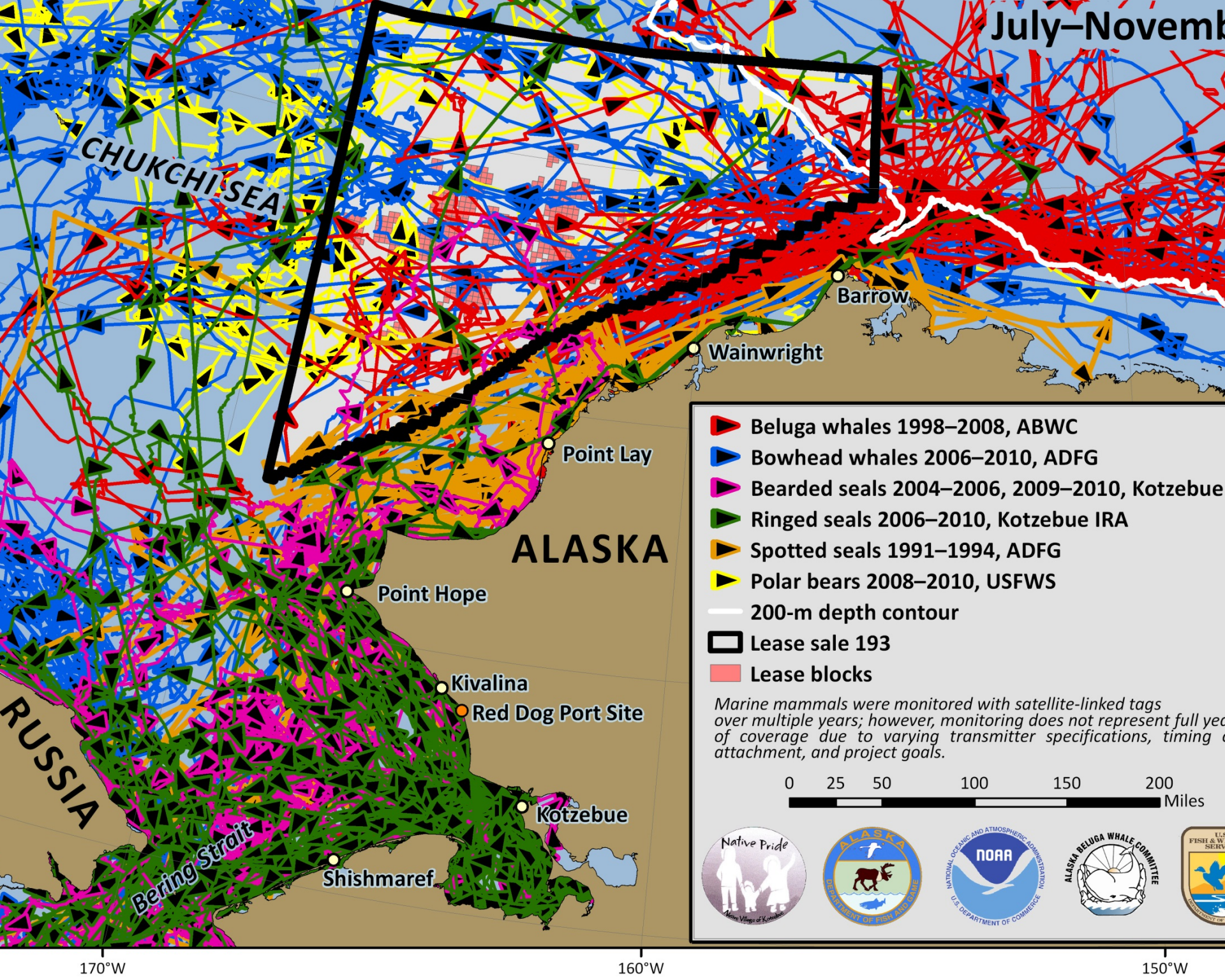




# Habitat use and seasonal movements of adult and sub-adult bearded seals in Kotzebue Sound, Alaska



July–November



CHUKCHI SEA

Barrow

Wainwright

Point Lay

ALASKA

Point Hope

Kivalina

Red Dog Port Site

Kotzebue

Shishmaref

RUSSIA

Bering Strait

- Beluga whales 1998–2008, ABWC
- Bowhead whales 2006–2010, ADFG
- Bearded seals 2004–2006, 2009–2010, Kotzebue IRA
- Ringed seals 2006–2010, Kotzebue IRA
- Spotted seals 1991–1994, ADFG
- Polar bears 2008–2010, USFWS
- 200-m depth contour
- Lease sale 193
- Lease blocks

*Marine mammals were monitored with satellite-linked tags over multiple years; however, monitoring does not represent full year of coverage due to varying transmitter specifications, timing of attachment, and project goals.*



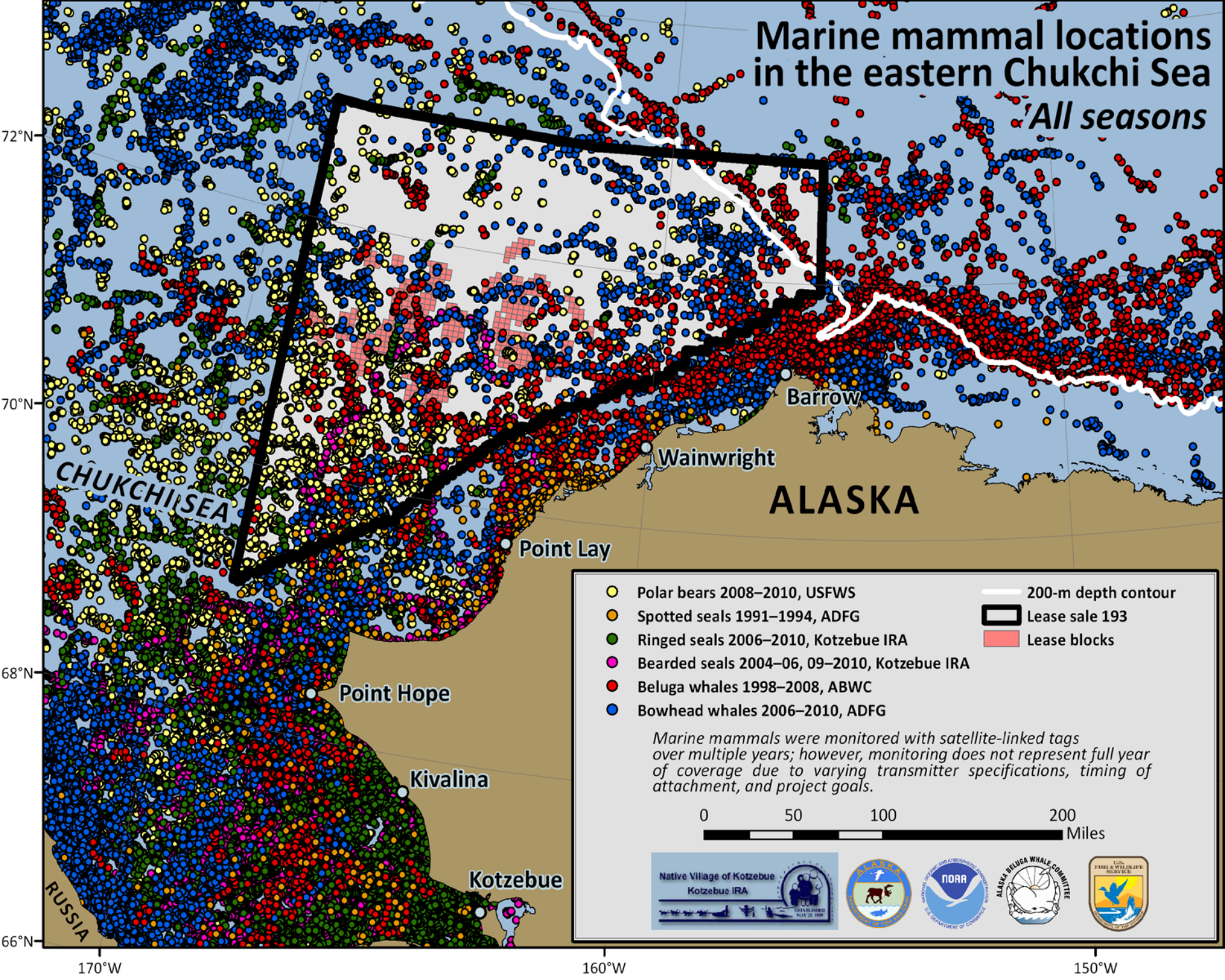
170°W

160°W

150°W

# Marine mammal locations in the eastern Chukchi Sea

All seasons

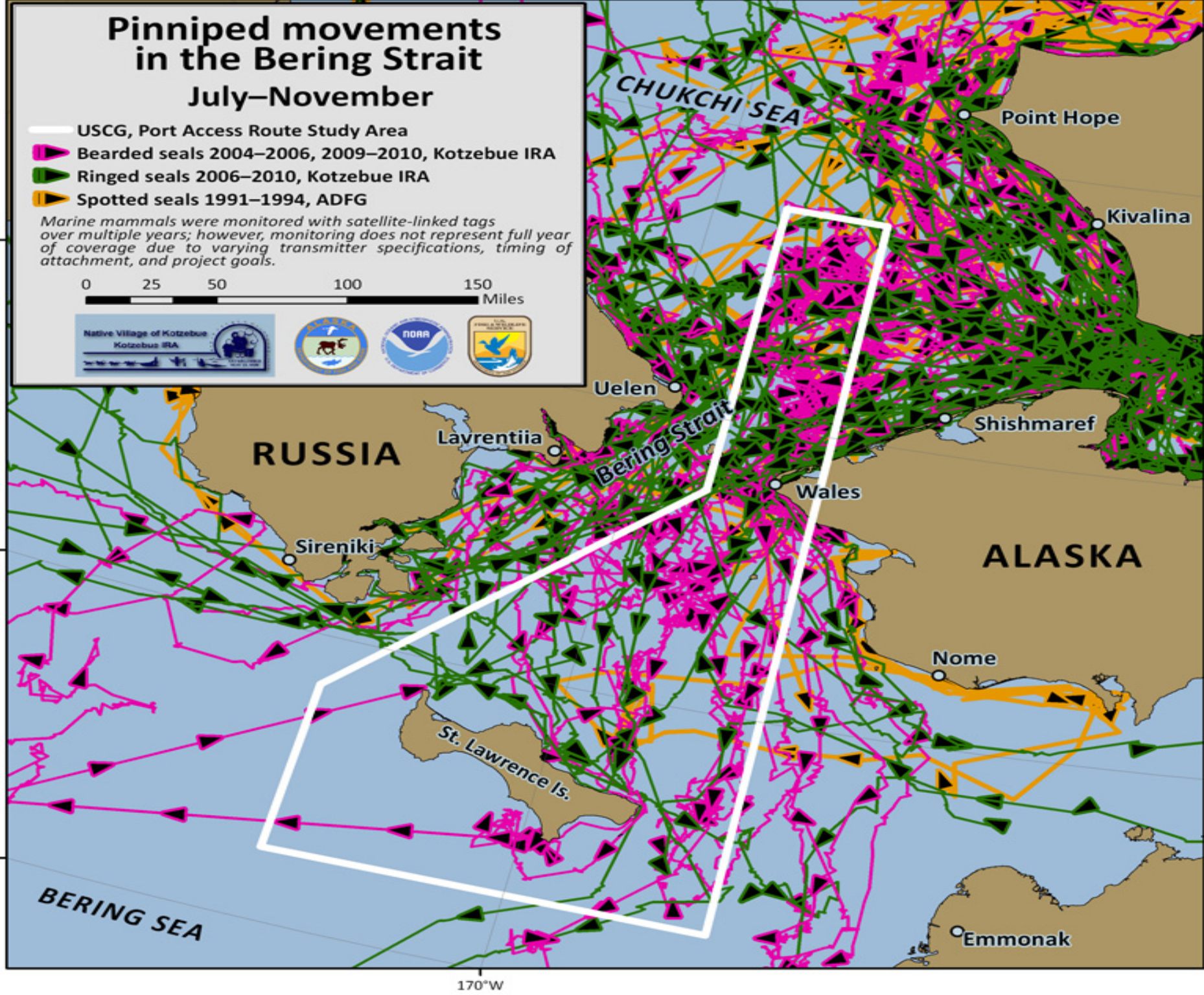


# Pinniped movements in the Bering Strait July–November

- USCG, Port Access Route Study Area
- ▲ Bearded seals 2004–2006, 2009–2010, Kotzebue IRA
- ▲ Ringed seals 2006–2010, Kotzebue IRA
- ▲ Spotted seals 1991–1994, ADFG

Marine mammals were monitored with satellite-linked tags over multiple years; however, monitoring does not represent full year of coverage due to varying transmitter specifications, timing of attachment, and project goals.

0 25 50 100 150 Miles



# Cetacean movements in the Bering Strait July–November

— USCG, Port Access Route Study Area

▶ Beluga whales 1998–2008, ABWC

▶ Bowhead whales 2006–2010, ADFG

Marine mammals were monitored with satellite-linked tags over multiple years; however, monitoring does not represent full year of coverage due to varying transmitter specifications, timing of attachment, and project goals.

0 25 50 100 150 Miles

